

**TECHNICAL MANUAL**

**ORGANIZATIONAL, DIRECT SUPPORT, AND  
GENERAL SUPPORT MAINTENANCE  
REPAIR PARTS AND SPECIAL TOOLS LIST  
(INCLUDING DEPOT MAINTENANCE REPAIR PARTS  
AND SPECIAL TOOLS)**

**FOR**

**REPAIR FACILITY, ELECTRONIC EQUIPMENT  
OA-8991 / MSM**

**(NSN 6625-01-070-4404)**

**HEADQUARTERS, DEPARTMENT OF THE ARMY  
24 AUGUST 1983**

---

TECHNICAL MANUAL }  
 }  
 No. 11-5410-217-24P }

HEADQUARTERS  
 DEPARTMENT OF THE ARMY  
 WASHINGTON, DC, 24 August 1983

**ORGANIZATIONAL, DIRECT SUPPORT, AND  
 GENERAL SUPPORT MAINTENANCE  
 REPAIR PARTS AND SPECIAL TOOLS LIST  
 (INCLUDING DEPOT MAINTENANCE REPAIR PARTS AND SPECIAL TOOLS)  
 FOR  
 REPAIR FACILITY, ELECTRONIC EQUIPMENT  
 OA-8991 /MSM  
 (NSN 6625-01-070-4404)  
 Current as of 15 September 1982**

**REPORTING ERRORS AND RECOMMENDING IMPROVEMENTS**

You can help improve this manual. If you find any mistakes or if you know of a way to improve the procedures, please let us know. Mail your letter, DA Form 2028 (Recommended Changes to Publications and Blank Forms), or DA Form 2028-2 located in back of this manual directly to: Commander, US Army Communications-Electronics Command and Fort Monmouth, ATTN: DR-SELME-MP, Fort Monmouth, NJ 07703.

In either case, a reply will be furnished directly to you.

SECTION	GROUP		Page	Illus Figure
I.		Introduction .....	1	
II.		Repair Parts List .....	5	
	00	Repair Facility OA-8991/MSM .....	5	1
	01	Van, Repair Facility.....	13	2
		0101 Electrical Installation .....	25	3
		010101 Raceway Installation (See next higher assembly for breakdown)		
		01010102 Meter Box Assembly .....	31	4
		01010103 Power Entrance Box Assembly .....	33	5
		0101010301 Cable Assembly (See next higher assembly for breakdown)		
		01010104 Air Conditioner (See TM 5-4120-308-25P or TM 5-4120-360-24P for parts)		
		01010105 Paneling Installation (No parts authorized)		
		0101010501 Van, Modified XM-991 (No parts authorized)		
		010102 Fixture Assembly (See next higher assembly for breakdown)		
		010103 Fixture Assembly (See next higher assembly for breakdown)		
		010104 Fixture Assembly (See next higher assembly for breakdown)		
		010105 Fixture Assembly (See next higher assembly for breakdown)		
		010106 Cable Assembly (See next higher assembly for breakdown)		
		0102 Emergency Lighting .....	35	6
		0103 Telephone Set TA-312/PT (See TM 11-5805-201-20P and TM 11-5830-221-34P)		
		0105 Digital Multimeter (See TM 11-6625-2953-40P for parts)		
		010107 Probe Assembly (See next higher assembly for breakdown)		

			Page	Illus Figure
GROUP	02	Cable Assembly .....	37	7
	02	Cable Assembly .....	39	8
	04	Intercom Set LS-147F/FI (See TM 11-5830-256-23P for parts)		
	05	M10 Alarm (See TM 3-6665-225-12 for parts)		
	06	M256 Detector (No parts authorized)		
	07	M11 Decontamination (See TM 3-4230-204-12+ for parts)		
	09	Oven (See next higher assembly for breakdown)		
	12	Lantern (See next higher assembly for breakdown)		
SECTION	III.	Special Tools List (Not applicable)		
	IV.	National Stock Number and Part Number Index .....	40	

SECTION I

INTRODUCTION

1. Scope

This manual lists spares and repair parts; special tools; special test, measurements, and diagnostic equipment (TMDE); and other special support equipment required for performance of organizational, direct support, and general support maintenance of the OA-8991/MSM. It authorizes the requisitioning and issue of spares and repair parts as indicated by the source and maintenance codes.

2. General

This Repair Parts and Special Tools List is divided into the following sections:

a. *Section II. Repair Parts List.* A list of spares and repair parts authorized for use in performance of maintenance. The list also includes parts which must be removed for replacement of the authorized parts. Parts list are composed of functional groups in numeric sequence, with the parts in each group listed in figure and item number sequence.

b. *Section III. Special Tools List.* Not applicable.

c. *Section IV. National Stock Number and Part Number Index.* A list, in National item identification number (NIIN) sequence, of all National stock numbers (NSN) appearing in the listings, followed by a list, in alphanumeric sequence, of all part numbers appearing in the listings. National stock numbers and part numbers are cross-referenced to each illustration figure and item number appearance.

3. Explanation of Columns

a. *Illustration.* This column is divided as follows:

- (1) Figure number. Indicates the figure number of the illustration on which the item is shown.
- (2) Item number. The number used to identify item called out in the illustration.

b. *Source, Maintenance, and Recoverability (SMR) Codes.*

(1) Source code. Source codes indicate the manner of acquiring support items for maintenance, repair, or overhaul of end items. Source codes are entered in the first and second positions of the Uniform SMR Code format as follows:

<i>Code</i>	<i>Definition</i>
PA-	Item procured and stocked for anticipated or known usage.
PD-	Support item, excluding support equipment, procured for initial issue or outfitting and stocked only for subsequent or additional

<i>Code</i>	<i>Definition</i>
	initial issues or outfittings. Not subject to automatic replenishment.
PE-	Support equipment procured and stocked for initial issue or outfitting to specified maintenance repair activities.
KF-	An item of a maintenance kit and not purchased separately. Maintenance kit defined as a kit that provides an item that can be replaced at organizational or intermediate levels of maintenance.
MF-	Item to be manufactured or fabricated at the direct support maintenance level.
XA-	Item is not procured or stocked because the requirements for the item will result in the replacement of the next higher assembly.
XB-	Item is not procured or stocked. If not available through salvage, requisition.
XC-	Installation drawing, diagram, instruction sheet, field service drawing that is identified by manufacturer's part number. Item is not procured or stocked and cannot be requisitioned.
XD-	A support item that is not stocked. When required, item will be procured through normal supply channels.

**NOTE**

Cannibalization or salvage may be used as a source of supply for any items source coded above except those coded XA and aircraft support items as restricted by AR 700-42.

(2) Maintenance code. Maintenance codes are assigned to indicate the levels of maintenance authorized to USE and REPAIR support items. The maintenance codes are entered in the third and fourth positions of the Uniform SMR Code format as follows:

(a) The maintenance code entered in the third position will indicate the lowest maintenance level authorized to remove, replace, and use the support item. The maintenance code entered in the third position will indicate one of the following levels of maintenance:

<i>Code</i>	<i>Application/Explanation</i>
O-	Support item is removed, replaced, used at the organizational level.
F-	Support item is removed, replaced, used at the direct support level.

(b) The maintenance code entered in the fourth position indicates whether the item is to be repaired and identifies the lowest maintenance level with the capability to perform complete repair (i.e., all authorized maintenance functions). This position will contain one of the following maintenance codes:

<i>Code</i>	<i>Application/Explanation</i>
O-	The lowest maintenance level capable of complete repair of the support item is the organizational level.
F-	The lowest maintenance level capable of complete repair of the support item is the direct support level.
D-	The lowest maintenance level capable of complete repair of the support item is the depot level.
Z-	Nonreparable. No repair is authorized.

(3) *Recoverability code*. Recoverability codes are assigned to support items to indicate the disposition action of unserviceable items. The recoverability code is entered in the fifth position of the Uniform SMR Code format as follows:

<i>Recoverability codes</i>	<i>Definition</i>
Z-	Nonreparable item. When unserviceable, condemn and dispose at the level indicated in position 3.
O-	Reparable item. When uneconomically repairable, condemn and dispose at organizational level.
F-	Reparable item. When uneconomically repairable, condemn and dispose at the direct support level.
D-	Reparable item. When beyond lower level repair capability, return to depot. Condemnation and disposal not authorized below depot level.

c. *National Stock Number*. Indicates the National stock number assigned to the item and will be used for requisitioning purposes.

d. *Part Number*. Indicates the primary number used by the manufacturer (individual, company, firm, corporation, or Government activity), which controls the design and characteristics of the item by means of its engineering drawings, specifications, standards, and inspection requirements to identify an item or range of items.

**NOTE**

When a stock numbered item is requisitioned, the repair part received may have a different part number than the part being replaced.

e. *Federal Supply Code for Manufacturer (FSCM)*. The FSCM is a 5-digit numeric code listed in SB 708-42 which is used to identify the manufacturer, distributor, or Government agency, etc.

f. *Description*. Indicates the Federal item name

and, if required, a minimum description to identify the item.

g. *Unit of Measure (U/M)*. Indicates the standard of the basic quantity of the listed item as used in performing the actual maintenance function. This measure is expressed by a two-character alphabetical abbreviation (e.g., ea., in, pr, etc.). When the unit of measure differs from the unit of issue, the lowest unit of issue that will satisfy the required units of measure will be requisitioned.

h. *Quantity Incorporated in Unit*. Indicates the quantity of the item used in the breakout shown on the illustration figure, which is prepared for a functional group, subfunctional group, or an assembly. A "V" appearing in this column in lieu of a quantity indicates that no specific quantity is applicable, (e.g., shims, spacers, etc.).

**4. Special Information**

a. Detailed manufacturing instructions for items source coded to be manufactured or fabricated are found in TM 11-5410-217-14 (to be published).

b. The following publications pertain to OA-8991/MSM and its components:

TM 3-4230-204-12+P, Decontaminating Apparatus, Portable, DS2, 1 1/2 Quart, ABC-M11.

TM 3-6665-225-12, Alarm, Chemical Agent, Automatic: Portable, Manpack, M8 Fixed Emplacement, M10 for Trucks, Utility: 1/4-Ton, M11; Truck: 3/4-Ton, M12; Truck: 2 1/2-Ton, M13; Full-Track, Armored Personnel Carriers and Recovery Vehicles, M14; Carrier, Command and Reconnaissance, Armored: M15 w/Power Supply for Truck, Utility: 1/4-Ton, M16; Truck: 3/4-Ton, M17 and Truck: 2 1/2-Ton, M18.

TM 5-4120-308-15, Air Conditioner, Compact Vertical, 208V, 3-Phase, 50/60 Hz, 18, 000 BTU Cooling, 12, 000 BTU Heating (KECO Industries Inc., Model F18T-2).

TM 5-4120-308-25P, Air Conditioner, Compact Vertical, 208V, 3-Phase, 50/60 Hz, 18, 000 BTU Cooling, 12, 000 BTU Heating (KECO Industries Inc., Model F18T-2).

TM 5-4120-360-14, Air Conditioner, Vertical, Compact Type 1, Vertical Size C, 18, 000 BTU/HR, 208V, 3 Phase, 50/60 Hz (KECO Model F18T-2).

TM 5-4120-360-24P, Air Conditioner, Vertical, Compact Type 1, Vertical Size C, 18, 000 BTU/HR, 208V, 3 Phase, 50/60 Hz (KECO Model F18T-2).

TM 11-5410-217-14, Repair Facility, Electronic Equipment OA-8991/MSM (to be published).

TM 11-5805-201-12, Telephone Set TA-312/ PT.

TM 11-5805-201-20P, Telephone Set TA-312/ PT.

- TM 11-5805-201-34P, Telephone Set TA-312/PT.
- TM 11-5805-201-35, Telephone Set TA-312/PT.
- TM 11-5830-256-13+P, Intercommunication Station LS-147/FI.
- TM 11-5830-256-23P, Intercommunication Station LS-147/FI.
- TM 11-6625-2953-14, Multimeter AN/USM-451.
- TM 11-6625-2953-40P, Multimeter AN/USM-451.

c. National stock numbers (NSN's) that are missing from P source coded items have been applied for and will be added to this TM by future change/revision when they are entered in the Army Master Data File (AMDF). Until the NSN's are established and published, submit exception requisitions to: Commander, US Army Communications-Electronics Command and Fort Monmouth, ATTN: DR-SEL-MM, Fort Monmouth, NJ 07703 for the part required to support your equipment.

**5. How to Locate Repair Parts**

a. When National stock number or part number is unknown.

(1) *First.* Using the table of contents, determine the functional group within which the item belongs. This is necessary since illustrations are prepared for functional groups and listings are divided into the same groups.

(2) *Second.* Find the illustration covering the functional group to which the item belongs.

(3) *Third.* Identify the item on the illustration and note the illustration figure and item number of the item.

(4) *Fourth.* Using the Repair Parts Listing, find the figure and item number noted on the illustration.

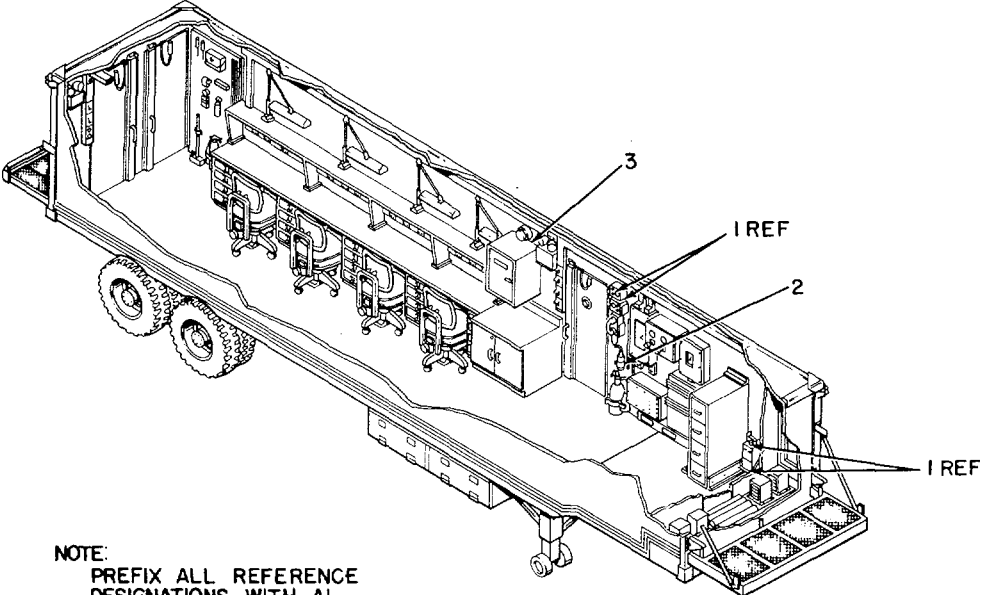
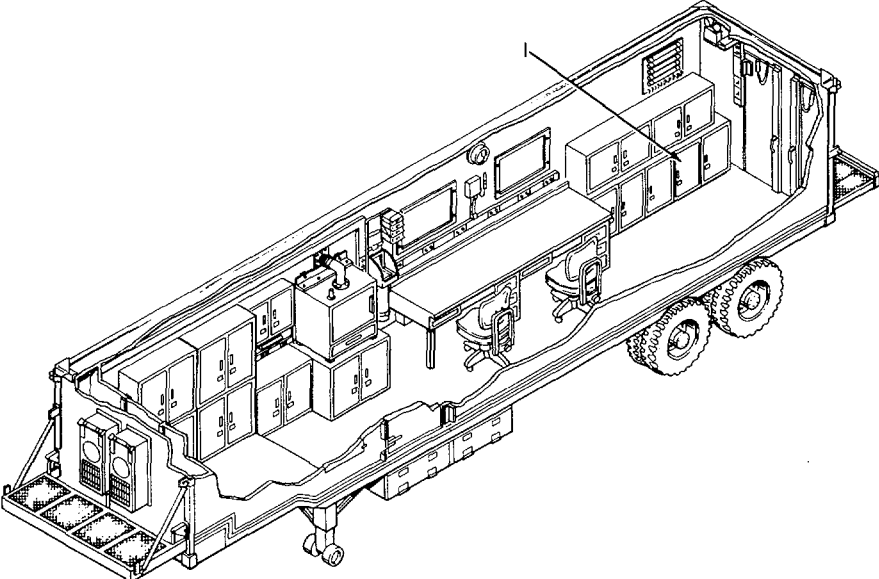
b. When National stock number or part number is known.

(1) *First.* Using the Index of National Stock Numbers and Part Numbers, find the pertinent National stock number or part number. This index is in NIIN sequence followed by a list of part numbers in alphanumeric sequence, cross-referenced to the illustration figure number and item number.

(2) *Second.* After finding the figure and item number, locate the figure and item number in the repair parts list.

**6. Abbreviations**

Not applicable.



NOTE:  
PREFIX ALL REFERENCE  
DESIGNATIONS WITH AI

EL8BP014

EL8BP014

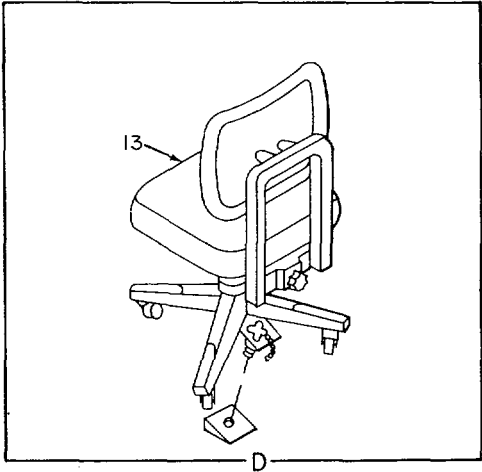
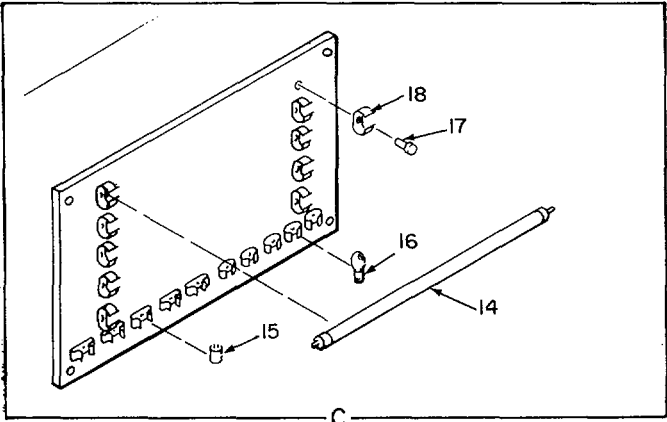
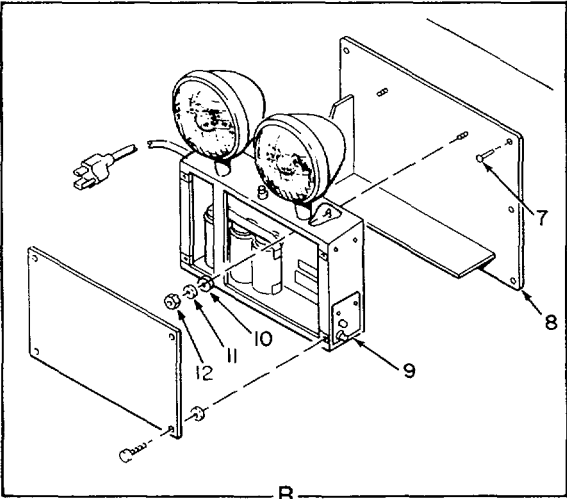
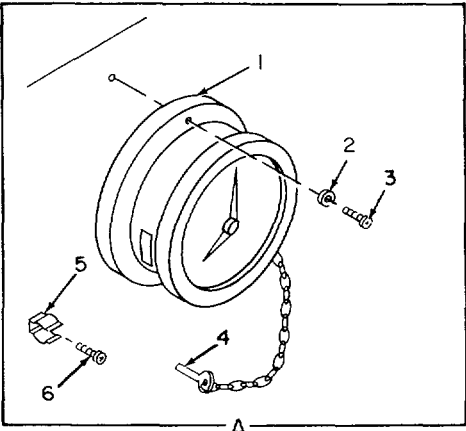
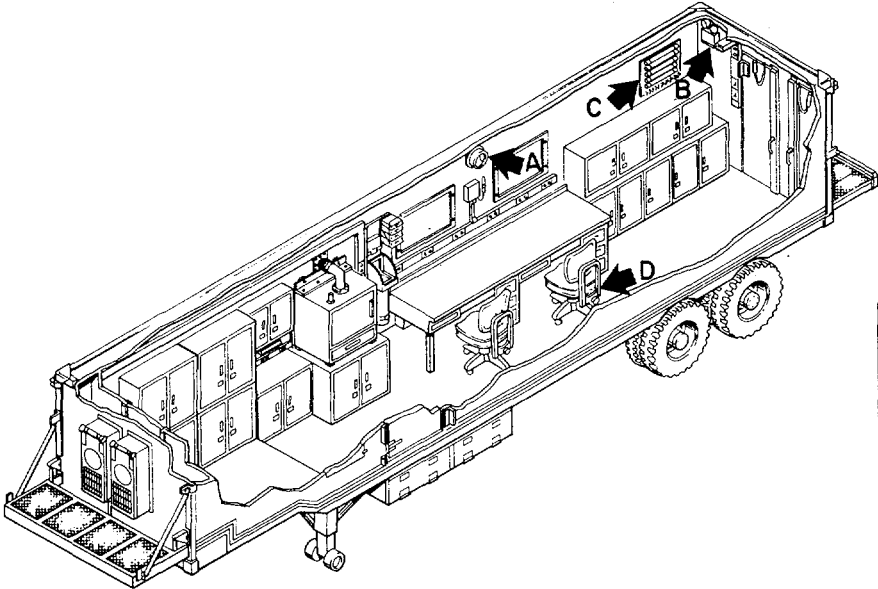
Figure 1. Repair Facility OA-8991/MSM.

SECTION II

TM 11-5410-217-24P

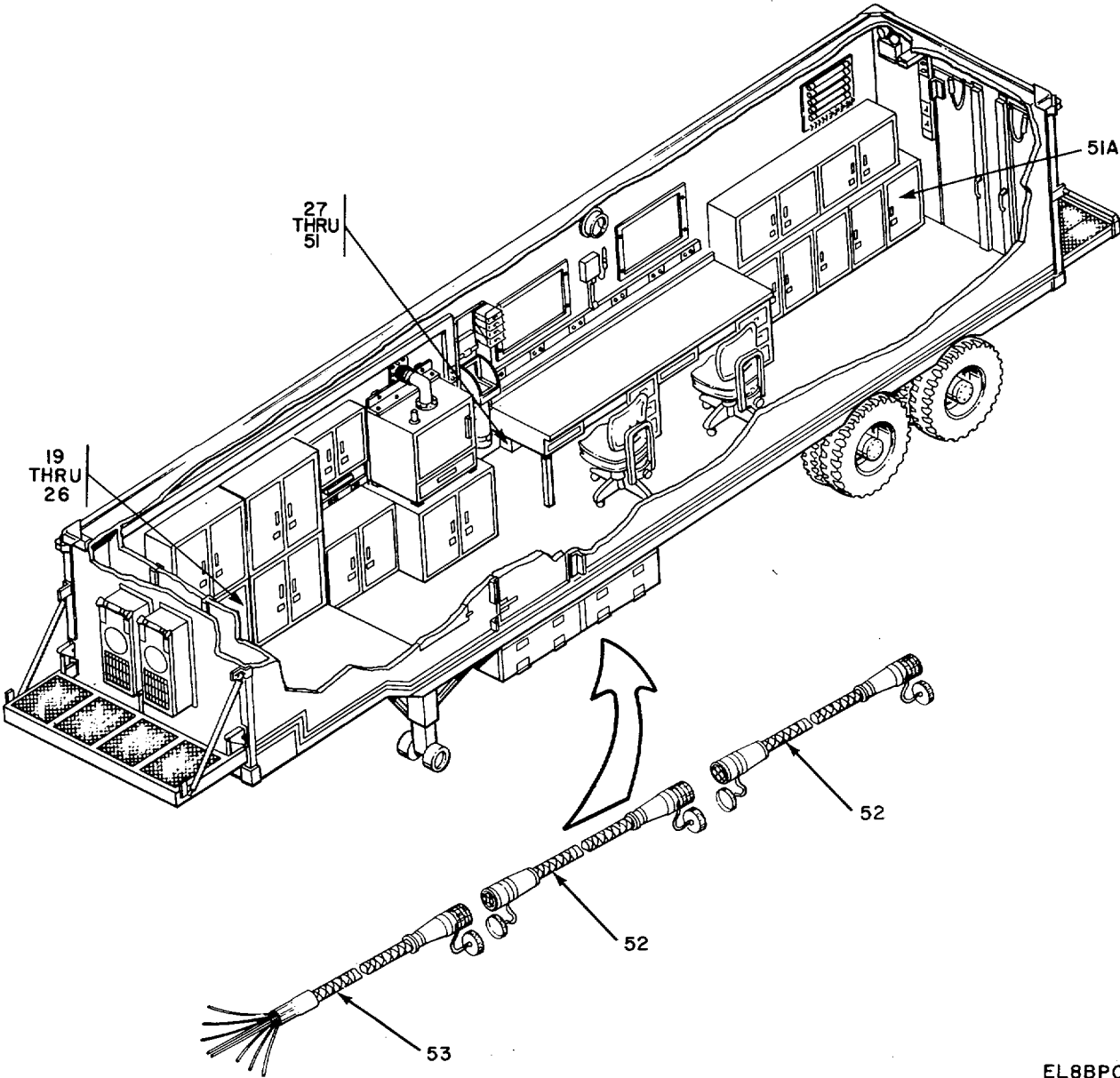
(1) ILLUSTRATION		(2)	(3)	(4)	(5)	(6)	(7)	(8)
(a) FIG NO.	(b) ITEM NO.	SMR CODE	NATIONAL STOCK NUMBER	FSCM	PART NUMBER	DESCRIPTION  USABLE ON CODE	U/M	QTY INC IN UNIT
1	1	XDODD		80058	M10	GROUP 00 REPAIR FACILITY OA-8991/MSM		
1	2	XDODD	4230-00-720-1618	81361	D5-51-269	ALARM, CHER AGENT10 .....	EA	1
1	3	XDODD		81361	D5-77-2001	DEP REPORTED STK-NO .....	EA	1
					5	DETECTOR UNIT M256 .....	EA	1





EL8BP015

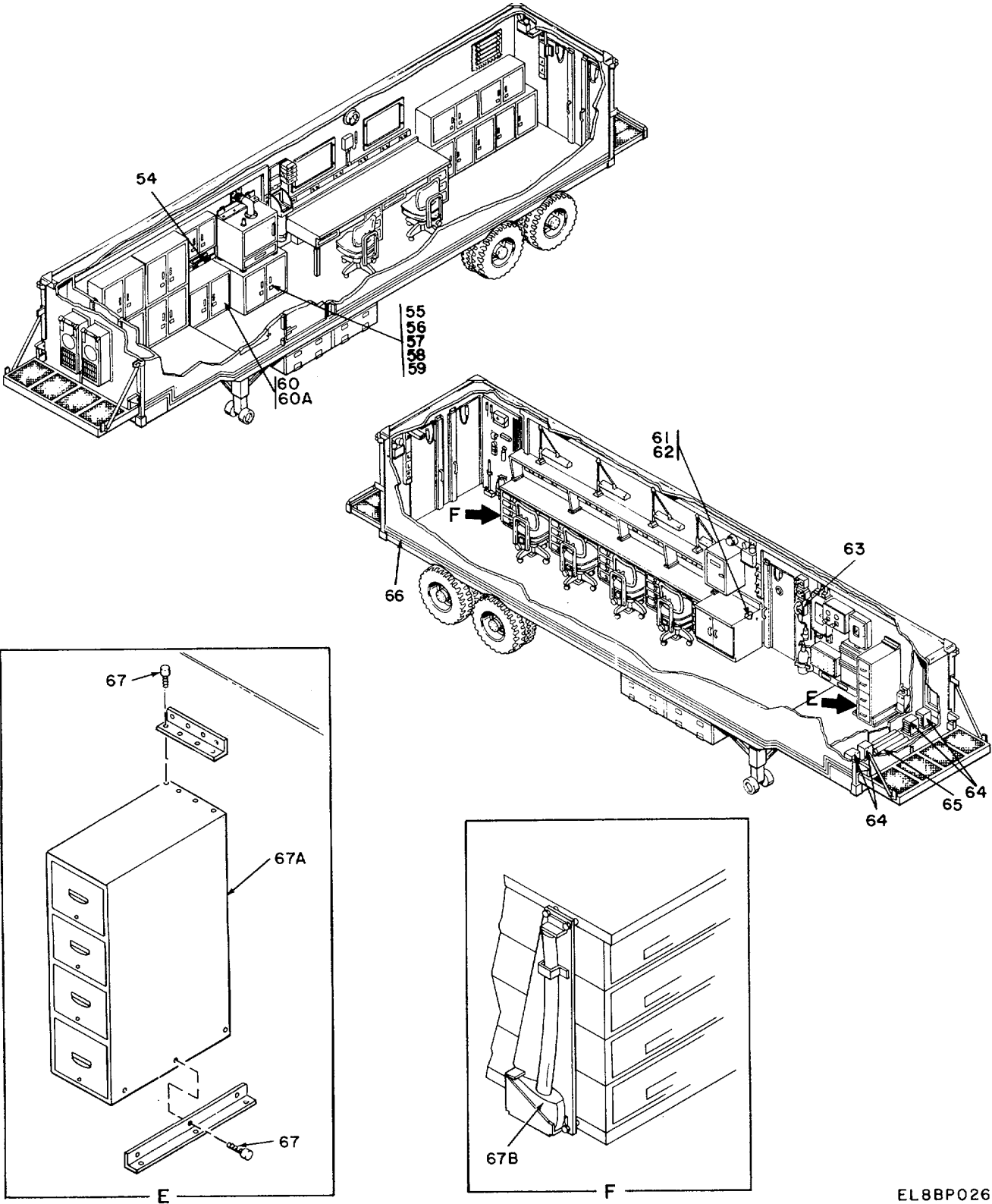
Figure 2. Van, Repair Facility (Sheet 1 of 7).



EL8BP016

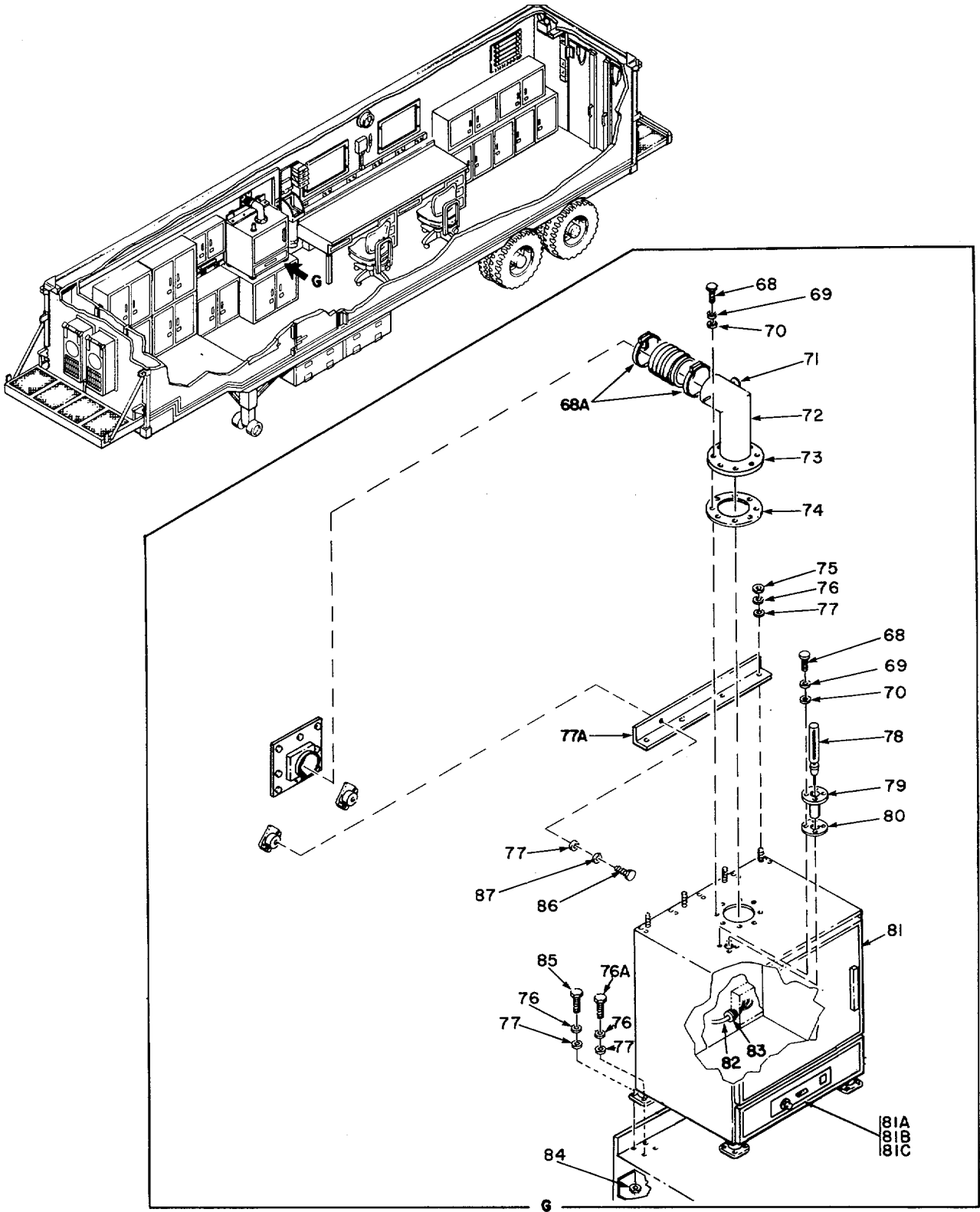
EL8BP016

Figure 2. Van, Repair Facility (Sheet 2 of 7).



EL8BP026

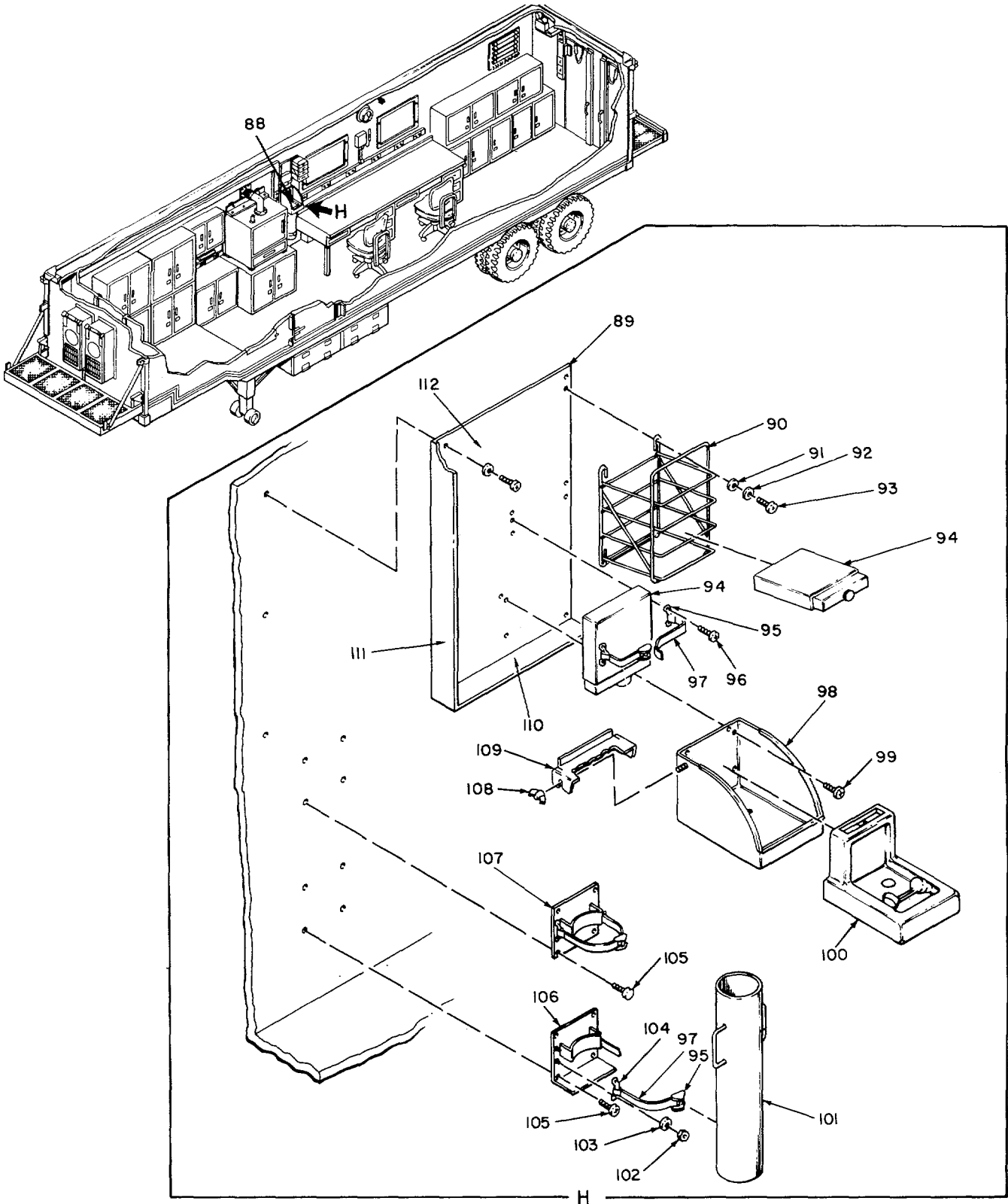
Figure 2. Van, Repair Facility (Sheet 3 of 7).



EL8BP018

Figure 2. Van, Repair Facility (Sheet 4 of 7).

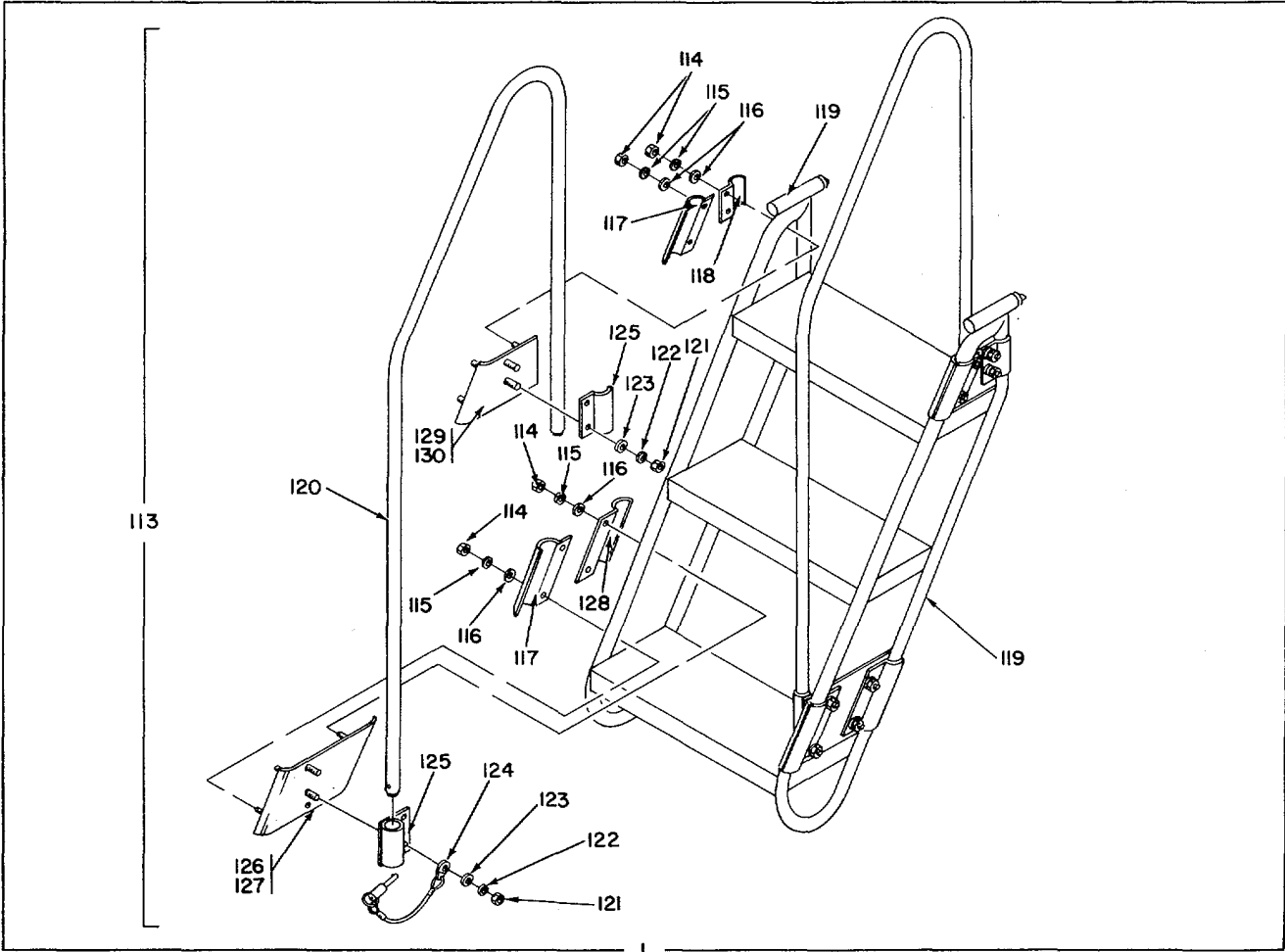
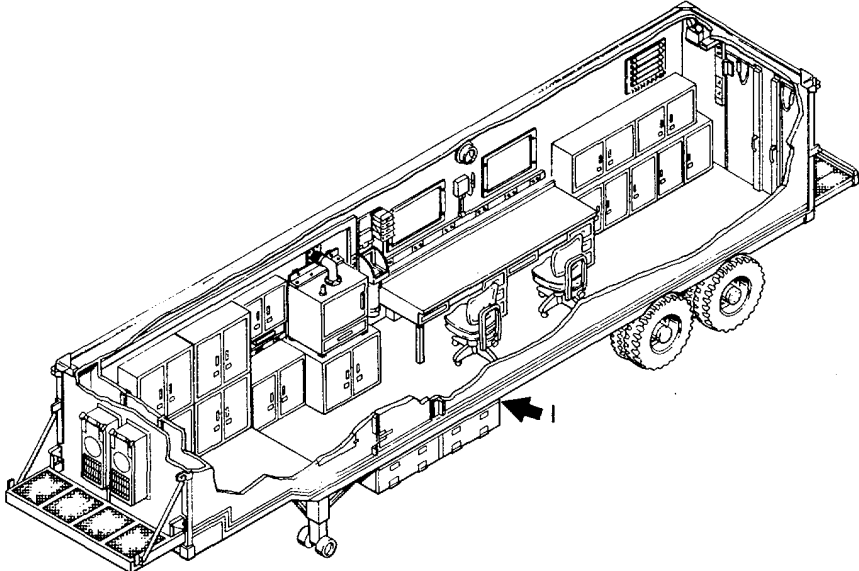
EL8BP018



EL8BP019

EL8BP019

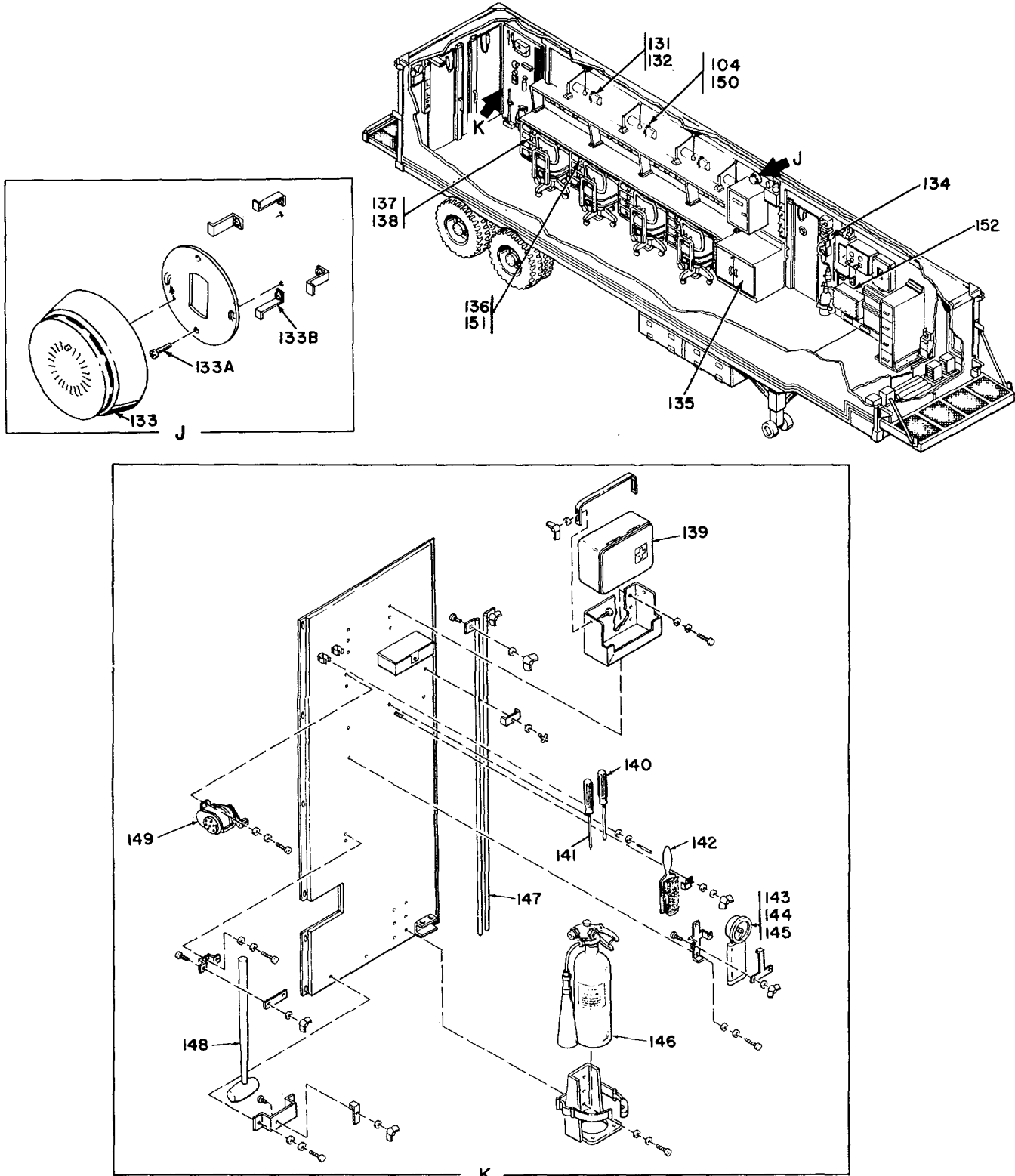
Figure 2. Van, Repair Facility (Sheet 5 of 7).



EL8BP021

Figure 2. Van, Repair Facility (Sheet 6 of 7).

EL8BP021



EL 88P022

EL8BP022

Figure 2. Van, Repair Facility (Sheet 7 of 7).

SECTION II

TM 11-5410-217-24P

(1) ILLUSTRATION		(2)	(3)	(4)	(5)	(6) DESCRIPTION	(7)	(8)
(a) FIG NO.	(b) ITEM NO.	SMR CODE	NATIONAL STOCK NUMBER	FSCM	PART NUMBER	USABLE ON CODE	U/M	QTY INC IN UNIT
GROUP 01 VAN REPAIR FACILITY								
2	1	PAOZZ		81349	MIL-C-11L4 TYPE A	CLOCK .....	EA	1
2	2	PAOZZ	5310-00-9B3-8483	96906	MS27183-5	WASHER,FLAT .....	EA	3
2	3	PAOZZ	5305-00-021-3620	96906	MS35307-307	SCREW,CAP, HEXAGON H.....	EA	12
2	4	XDOZZ		56996	B4008466	KEY ASSY .....	EA	1
2	5	XDOZZ	5999-00-879-6320	81349	M24066/2-304	CLIP, EA.....	EA	1
2	6	PAOZZ	5305-00-059-3667	96906	MS1958-71	SCREW, MACHINE.....	EA	3
2	7	PADZZ	5305-00-147-3241	96906	MS35307-271	SCREW,PH .....	EA	10
2	8	XDOZZ		56996	84008049	BRACKET ASSY .....	EA	2
2	9	PADOO		80538	CC-2-BH-SRS- CP-M	EMERGENCY LIGHTING .....	EA	2
2	10	PAOZZ	5310-00-883-9384	96906	MS15795-842	WASHER,FLAT .....	EA	4
2	11	PAOZZ	5310-00-933-8120	96906	MS35338-138	WASHER, LOCK .....	EA	6
2	12	PAOZZ	5310-00-934-9765	96906	MS35650-304	NUT, PLAIN, HEXAGON .....	EA	6
2	13	XDOZZ	7110-01-094-5655	80063	SC-D-539551	CHAIR, ROTARY.....	EA	4
2	14	XDOZZ	6240-00-152-2996	80063	SC-C-539495	LAMP, FLUORESCENT.....	EA	5
2	15	PAOZZ		80063	SC-C-539504	LAMP,STARTER .....	EA	5
2	16	PAOZZ		08806	25T8DC	LAMP, INCANDESCENT.....	EA	5
2	17	PAOZZ	5305-00-497-7410	96906	MS51861-53C	SCREW, TAPPING,THREA.....	EA	4
2	18	PAOZZ		80063	SC-C-539529-1	CLIP, SPRING .....	EA	15
2	19	PEOZZ	3439-00-267-7151	17794	6019-0011	HOT CUBBY ASSEMBLY.....	EA	4
2	20	PEOZZ	3426-01-067-3616	17794	PE-200A	PLATING UNIT, SWAB .....	EA	2
2	21	PEOZZ	5130-01-041-2278	17794	PPF-30	EYELETING, FUSED,SY.....	EA	2
2	23	PEOZZ		17794	PP200C	ZERO PWR SWITCH .....	EA	4
2	23A	XDOZZ		17794	1336-0014	PUMP .....	EA	1
2	23B	XDOZZ		17794	1309-0015	FILTER, FELT.....	EA	1
2	24	XDOZZ		17794	7005-0011	MACHINING SYSTEM,MI.....	EA	4
2	25	PAOZZ		56996	B4008670	WISE ASSEMBLY .....	EA	1
2	26	KFOZZ		56996	B4008740	WISE KIT.....	EA	4
2	27	PEOZZ	5140-00-289-8910	81348	GGGT558-2	TOOL BOX, PORTABLE.....	EA	4
2	28	PEOZZ		80244	GGG-P-468TYP1 CL1	PLIERS,CUTTING .....	EA	4
2	29	PEOZZ	5120-00-293-3486	81349	GGG-P-471TYP2 CL2	PLIERS.....	EA	4
2	30	PEOZZ	5120-00-239-8250	81348	GGG-P-471TY11 CL2	PLIERS.....	EA	4
2	31	PEOZZ	5120-00-293-3481	81348	GGG-P-471TY12 CL1	PLIERS.....	EA	4
2	32	PEOZZ	5120-00-236-2140	81348	GGG-S-121TYP1 CL1	SCREWDRIVER,FLAT TI.....	EA	4
2	33	PEOZZ	5120-00-227-7377	81348	GGG-S-121TYP1 CL8	SCREWDRIVER,FLAT TI.....	EA	4
2	34	PEOZZ	5120-00-278-1270	81349	GGG-S-121TYP6 CL1	SCREWDRIVER, FLAT P1.....	EA	4
2	35	PEOZZ	5120-00-233-6985	81349	GGG-T-870TYP3	TWEEZERS,CRAFTSMANS .....	EA	4
2	36	PEOZZ	5110-00-175-3629	17794	7016-0003	KNIFE,CRAFTSNANS .....	EA	5
2	37	PEOZZ		56996	84008642	MAGNIFIER.....	EA	5



## SECTION II

TM 11-5410-217-24P

(1) ILLUSTRATION		(2)	(3)	(4)	(5)	(6)	(7)	(8)
(a) FIG NO.	(b) ITEM NO.	SMR CODE	NATIONAL STOCK NUMBER	FSCM	PART NUMBER	DESCRIPTION  USABLE ON CODE	U/M	QTY INC IN UNIT
2	38	PEOZZ	4940-00-492-4728	17794	HP150	ENVIROMENTAL PROBE .....	EA	4
2	39	PEOZZ	4940-00-492-4739	17794	7014-0001	VACUUM CLEANER SYS.....	EA	4
2	40	PEOZZ	4240-00-052-3776	81348	GGG531	GOGGLES, INDUSTRIAL.....	EA	4
2	41	PAOZZ	3439-00-260-7719	17794	LS-15	SOLDERING KIT.....	EA	4
2	42	PEOZZ	3439-00-269-8404	17194	TP-15	THERMAL PARTING MOD.....	EA	4
2	43	PEOZZ	3439-00-041-1985	17194	CT-15	CONDUCTIVE TWEEZER.....	EA	4
2	43A	XC		99999	MISSION TOOLS	MISSION TOOLS	EA	1
2	44	PEOZZ	3439-00-853-8760	80058	TL-905/U	SOLDERING IRON, ELEC.....	EA	4
2	45	PEOZZ	3439-00-973-2249	71612	46	HEAT SINK SOLDER.....	EA	4
2	46	PEOZZ	5999-00-879-6320	76545	34C	CLIP, ELECTRICAL.....	EA	4
2	47	PEOZZ	5120-00-247-0864	81349	GGG-T-870TY	P1..... TWEEZERS, CRAFTSMAN	EA	5
					CL2			
2	48	PEOZZ		17794	7010-0023	DESOLDERING TOOL, ELT.....	EA	4
2	49	PEOZZ		17794	TS-15	STRIP TWEEZTRIP.....	EA	4
2	50	PEOZZ	3439-00-155-459T	17794	7009-0005	RESISTWEEZ ASSY .....	EA	4
2	50A	PEOZZ		78525	YANKEE135A	ND..... SCREW DRIVER, PH	EA	4
					351D			
2	51	PEOZZ	5110-00-239-8253	81348	GGG-P-468TY	P1..... PLIERS, DIAGONAL CU	EA	8
					CL1			
2	51A	PEOZZ	4940-00-492-4739	17794	7014-0001	VACUUM CLEANER SYS.....	EA	4
2	52	MFFFF		80063	SC-D-883963	GR..... CABLE ASSEMBLY, POWE	EA	2
					9-3			
2	53	MFFFF		80063	SC-D-883964	GR..... CABLE ASSEMBLY, POWE	EA	1
					9-2			
2	54	PAOOO		61562	XX-15	LIGHT, BLACK.....	EA	1
2	55	PEOZZ		56996	B4008569	BINOCULAR HEAD .....	EA	1
2	56	PEOZZ		56996	B4008570	MICROSCOPE BASE .....	EA	1
2	57	PEOZZ		56996	B4008571	EYEPIECE.....	EA	1
2	58	PEOZZ		56996	B4008572	FOCUSING UNIT .....	EA	1
2	59	PAFZZ	6150-00-495-1214	80063	SC-B-539492	LEAD, ELECTRICAL.....	EA	2
2	60	PEOOO	5180-00-064-5178	80058	TK-101/G	TOOL KIT, ELECTRONIC.....	EA	1
2	60A	KFOZZ		95356	0122	MASTER TOOL KIT .....	EA	4
2	61	PAFZZ	5305-00-497-7410	96906	MS51861-53C	SCREW, TAPPING, THREA.....	EA	16
2	62	PAOZZ	5310-00-883-9384	96906	MS15795-842	WASHER, FLAT .....	EA	100
2	63	PDOFD	5805-00-543-0012	80058	TA-312/PT	TELEPHONE SET.....	EA	1
2	64	XDFZZ		97403	13217E6150	HEATER, ELEC .....	EA	4
2	65	XDOZZ		76381	8210	TABLE MAT, STATIC .....	EA	4
2	66	NOT USED						
2	67	PAOZZ	5305-00-993-2459	96906	MS35207-283	SCREW, MACHINE .....	EA	7
2	67A	XDOZZ		56996	B4008679-002	FILE CABINET MOD.....	EA	1
2	67B	XDDZZ	5110-00-115-5049	80063	SC-C-539451	AXE, SINGLE BIT .....	EA	1
2	68	PAFZZ	5305-00-054-6674	96906	MS51957-49	SCREW, MACHINE .....	EA	4
2	68A	PAFZZ	4730-00-908-6293	96906	MS35842-15	CLAMP, HOSE.....	EA	2
2	69	PAFZZ	5310-00-225-5328	96906	MS15795-841	WASHER, FLAT .....	EA	4
2	70	PAFZZ	5310-00-933-8119	96906	MS35338-137	WASHER, LOCK.....	EA	4

SECTION II

TM 11-5410-217-24P

(1) ILLUSTRATION		(2)	(3)	(4)	(5)	(6)	(7)	(8)
(a) FIG NO.	(b) ITEM NO.	SMR CODE	NATIONAL STOCK NUMBER	FSCM	PART NUMBER	DESCRIPTION  USABLE ON CODE	U/M	QTY INC IN UNIT
2	71	XDFZZ		39428	1787K12	DAMPER .....	EA	1
2	72	XDFZZ		56996	B4008711	VENT, TOP .....	EA	1
2	73	XDFZZ		56996	B4008715	VENT, TOP ASSY .....	EA	1
2	74	PAFZZ		56996	B4008712	GASKET, VENT .....	EA	1
2	75	PAFZZ	5310-00-997-1888	96906	MS35649-2252	..... NUT, PLAIN, HEXAGON	EA	
64								
2	76	PAOZZ	5310-00-933-8121	96906	MS35338-139	WASHER, LOCK .....	EA	124
2	76A	PAOZZ	5305-00-137-3033	96906	MS51861-27C	SCREW, TAPPING THREA .....	EA	3
2	77	PAOZZ	5310-00-582-5677	96906	MS15795-810	WASHER, FLAT .....	EA	158
2	77A	XDOZZ		56996	B4008556	ANGLE (OVEN) .....	EA	1
2	78	PAOZZ		39428	3922K51	THERMOMETER, OVEN .....	EA	1
2	79	XDFZZ		56996	B4008760	FEED-THRU, OVEN THER .....	EA	1
2	80	XDFZZ		56996	B4008761	GASKET, THERM .....	EA	1
2	81	PAOOO	6625-01-127-3593	56996	B4008558	OVEN .....	EA	1
2	81A	PAOZZ		56996	B4008585-004	CABLE ASSEMBLY .....	EA	1
2	81B	PAOZZ	5930-01-124-8390	48619	239097	THERMOSTAT .....	EA	1
2	81C	PAOZZ	4540-01-124-3417	48619	247278	HEATING ELEMENT, ELE .....	EA	1
2	82	PAFZZ	5975-00-844-7083	59730	2542	BOX CONNECTOR, ELEC .....	EA	1
2	83	PAFZZ		80063	SC-C-681078-3	..... LOCKNUT, ELECTRICAL	EA	1
2	84	PAOZZ	5310-01-025-6444	96906	MS51941-10	NUT, PLAIN, PLATE .....	EA	16
2	85	PAOZZ	5305-00-021-3668	96906	MS35307-310	SCREW, CAP, HEXAGON H .....	EA	4
2	86	PAOZZ	5305-00-721-5665	96906	MS35307-361	SCREW, CAP, HEXAGON H .....	EA	2
2	87	PAOZZ	5310-00-984-7042	96906	MS35338-141	WASHERLOCK .....	EA	2
2	88	XC		56996	B4008767	EYE WASH, INST .....	EA	1
2	89	XDFZZ		56996	B4008742	MTG BD EYE WASH .....	EA	1
2	90	XDFZZ		56996	B4008744	BRKT, EYE BAT 8 .....	EA	1
2	91	PAFZZ	5310-00-968-5208	80205	NAS1070-416	WASHER, FLAT .....	EA	4
2	92	PAFZZ	5310-00-082-1404	96906	MS27183-6	WASHER, FLAT .....	EA	4
2	93	PAFZZ	5305-00-151-3723	96906	MS35493-35	SCREW, WOOD .....	EA	4
2	94	XBOZZ		00236	401	REFILLS, EYEBATH .....	GL	V
2	95	XDFZZ	5340-00-238-9411	80063	SC-A-47792-4	LOOP, STRAP FASTENER .....	EA	4
2	96	PAFZZ	5305-00--249-2665	96906	MS35494-32	SCREW, WOOD .....	EA	4
2	97	XDFZZ		56996	B4008442-001	STRAP ASSEMBLY .....	EA	1
2	98	XDFZZ		56996	B4008768	HOLDER, EYE WASH .....	EA	1
2	99	PAFZZ	5305-01-116-3523	96906	MS35494-58	SCREWOOD .....	EA	4
2	100	XDFZZ		00236	400	FLASH FLOOD EYEBATH .....	EA	1
2	101	XOOZZ		56996	B4008770	CONTAINER, WATER, WAS .....	EA	1
2	102	PAFZZ	5310-00-982-6813	96906	MS21044-C06	NUT, SELF-LOCKING, HE .....	EA	8
2	103	PAFZZ	5310-00-880-5976	96906	MS15795-806	WASHER, FLAT .....	EA	8
2	104	PAFZZ		56996	B4008443	STRAP ASSY .....	EA	4
2	105	PAFZZ	5305-00-432-7954	96906	MS51861-39	SCREW, TAPPING, THREA .....	EA	8

## SECTION II

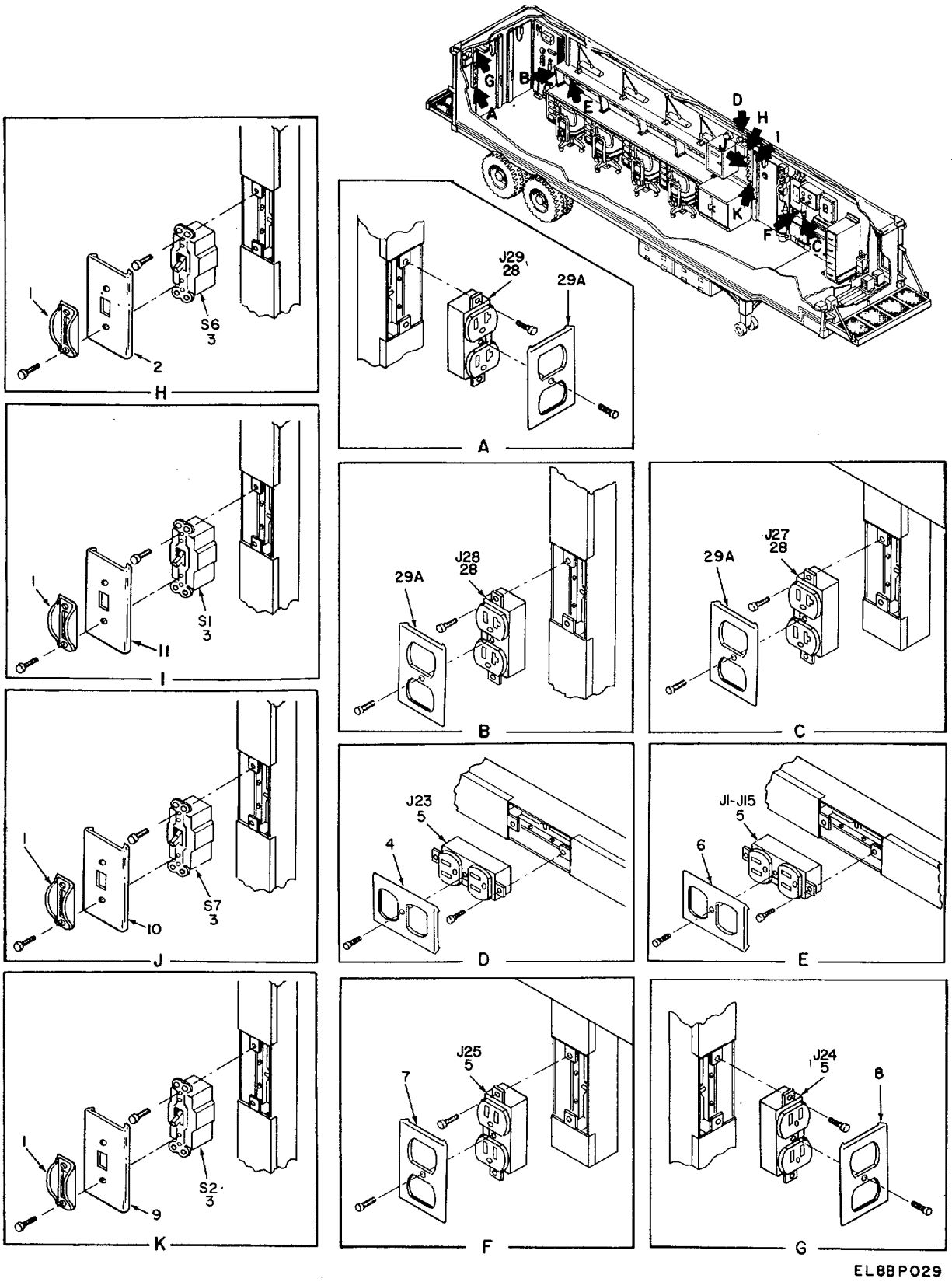
TM 11-5410-217-24P

(1) ILLUSTRATION		(2)	(3)	(4)	(5)	(6)	(7)	(8)	
(a) FIG NO.	(b) ITEM NO.	SMR CODE	NATIONAL STOCK NUMBER	FSCM	PART NUMBER	DESCRIPTION  USABLE ON CODE	U/M	QTY INC IN UNIT	
2	106	XDFZZ		56996	B4008774	SPRT, WASTE CNTNR .....	EA	1	
2	107	XDFZZ		56996	B4008773	SPRT, WASTE CNTNR .....	EA	1	
2	108	PAFZZ		96906	MS35425-71	NUT, PLAIN, WING .....	EA	2	
2	109	XDOZZ		56996	B4008769	CAP, EYE WASH .....	EA	1	
2	110	XDFZZ		56996	B4008742-1	MHTG D BOTTOM.....	EA	1	
2	111	XDFZZ		56996	B4008742-2	MTG BD SIDE .....	EA	1	
2	112	XDFZZ		56996	B4008742-3	MTG BD BACK.....	EA	1	
2	113	XDFZZ		56996	B4008145	LADDER ASSY .....	EA	1	
2	114	PAFZZ	5310-00-250-9477	96906	MS35649-2254	.....NUT, PLAIN, HEXAGON	EA		
16	2	115	PAFZZ	5310-00-582-5677	96906	MS15795-810	WASHER, FLAT .....	EA	16
2	116	PAFZZ	5310-00-933-8121	96906	MS35338-139	WASHER, LOCK.....	EA	16	
2	117	XDFZZ		56996	B4008751	CLIP,LADDER LEFT .....	EA	3	
2	118	XDFZZ		56996	B4008752	CLIP,TOP, LADDER .....	EA	2	
2	119	XDFZZ		19207	11684608	LADDER .....	EA	1	
2	120	XDFZZ		56996	B4008746	HANDRAIL .....	EA	1	
2	121	PAFZZ	5310-01-043-0041	96906	MS35649-2316	.....NUT, PLAIN, HEXAGON	EA	8	
2	122	PAFZZ	5310-00-974-6623	96906	MS35338-140	WASHER, LOCK.....	EA	8	
2	123	PAFZZ	5310-00-625-5756	96906	MS15795-812	WASHER,FLAT .....	EA	8	
2	124	PAFZZ		56996	B4008764	PIN AND LANYARD.....	EA	2	
2	125	XDFZZ		56996	B4008753	PLATE, HANDRAIL, LADD .....	EA	4	
2	126	XDFZZ		56996	B4003749	LADDER PLATE BOTTOM.....	EA	1	
2	127	XDFZZ		56996	B4008750	LADDER PLATE BOTTOM.....	EA	1	
2	128	XDFZZ		56996	B4008726	CLIP, LADDER RIGHT.....	EA	3	
2	129	XDFZZ		56996	B4008748	LADDER PLATE TOP RI .....	EA	1	
2	130	XDFZZ		56996	B4008747	LADDER PLATE TOP LE.....	EA	1	
2	131	XDOOO		81348	W-L-312TYPE3	..... LAMP DESK	EA	4	
2	132	PAOZZ	6240-00-152-2982	08806	F15T8CW	LAMP, FLUORESCENT.....	EA	1	
2	133	PAOZZ		56996	B4008757	SMOKE DETECTOR.....	EA	1	
2	133A	PAFZZ	5305-00-432-4169	96906	MS51861-14	SCREW, TAPPING, THREA .....	EA	4	
2	133B	PAFZZ		56996	B4008775	STRAP, SUPPORT .....	EA	4	
2	134	PDOFF	5830-01-008-3126	80058	LS-147F/F1	INTERCOMMUNICATION .....	EA	1	
2	135	PDOHD	6625-01-060-6804	80058	AN/USM-451	MULTIMETER.....	EA	1	
2	136	XDOZZ	6625-01-116-2292	52942	2064	STRAP, WRIST,STATIC .....	EA	4	
2	137	XDOZZ		81348	W-L-661TYPE1	.....DROP LIGHT	EA	1	
2	138	PAOZZ		08806	60W	LAMP, VACUUM .....	EA	1	
2	139	XDOZZ		80063	SC-D-681425	FIRST AID KIT .....	EA	1	
2	140	PEOZZ	5120-00-451-8250	80063	SC-C-539502	SCREWDRIVER .....	EA	1	
2	141	PEOZZ	5120-00-240-8716	80063	SC-C-539894	SCREWDRIVER, CROSS T .....	EA	1	
2	142	XDOZZ	7920-00-178-8315	80063	SC-C-539469	BRUSH,DUSTING,BENCH.....	EA	1	
2	143	XDDZZ	6230-00-729-9614	32532	2106-7	LANTERN.....	EA	1	

SECTION II

TM 11-5410-217-24P

(1) ILLUSTRATION		(2)	(3)	(4)	(5)	(6)	(7)	(8)
(a) FIG NO.	(b) ITEM NO.	SMR CODE	NATIONAL STOCK NUMBER	FSCM	PART NUMBER	DESCRIPTION  USABLE ON CODE	U/M	QTY INC IN UNIT
2	144	PAOZZ	6240-00-155-7786	08806	PR2	LAMP, INCANDESCENT .....	EA	1
2	145	PAOZZ	6135-01-103-6514	90303	SIZE D	BATTERY, MERCURY.....	EA	4
2	146	XDOZZ	4210-00-270-4512	80063	SC-D-539482	EXTINGUISHER, FIRE, C.....	EA	2
2	147	XDFZZ	5975-00-224-5260	80063	SC-D-14158	ROD, GROUND MX-148/G .....	EA	2
2	148	XDOZZ	5120-01-110-9193	76732	8D-8	HAMMER, HAND .....	EA	1
2	149	PEOZZ	7520-00-162-6178	80063	SC-C-539503	SHARPENER, PENCL.....	EA	1
2	150	PAFZZ		56996	B4008442-005	STRAP ASSY.....	EA	4
2	151	PEDZZ	4940-01-05-0041	17794	6993-0037	CIR-KIT SELECTOR PA .....	EA	4
2	152	XDFFF		56996	84008513	PWR ENTRANCE BOX .....	EA	1
<b>17/(18BLANK)</b>								



EL8BP029

EL8BP029

Figure 3. Electrical Installation (Sheet 1 of 6).

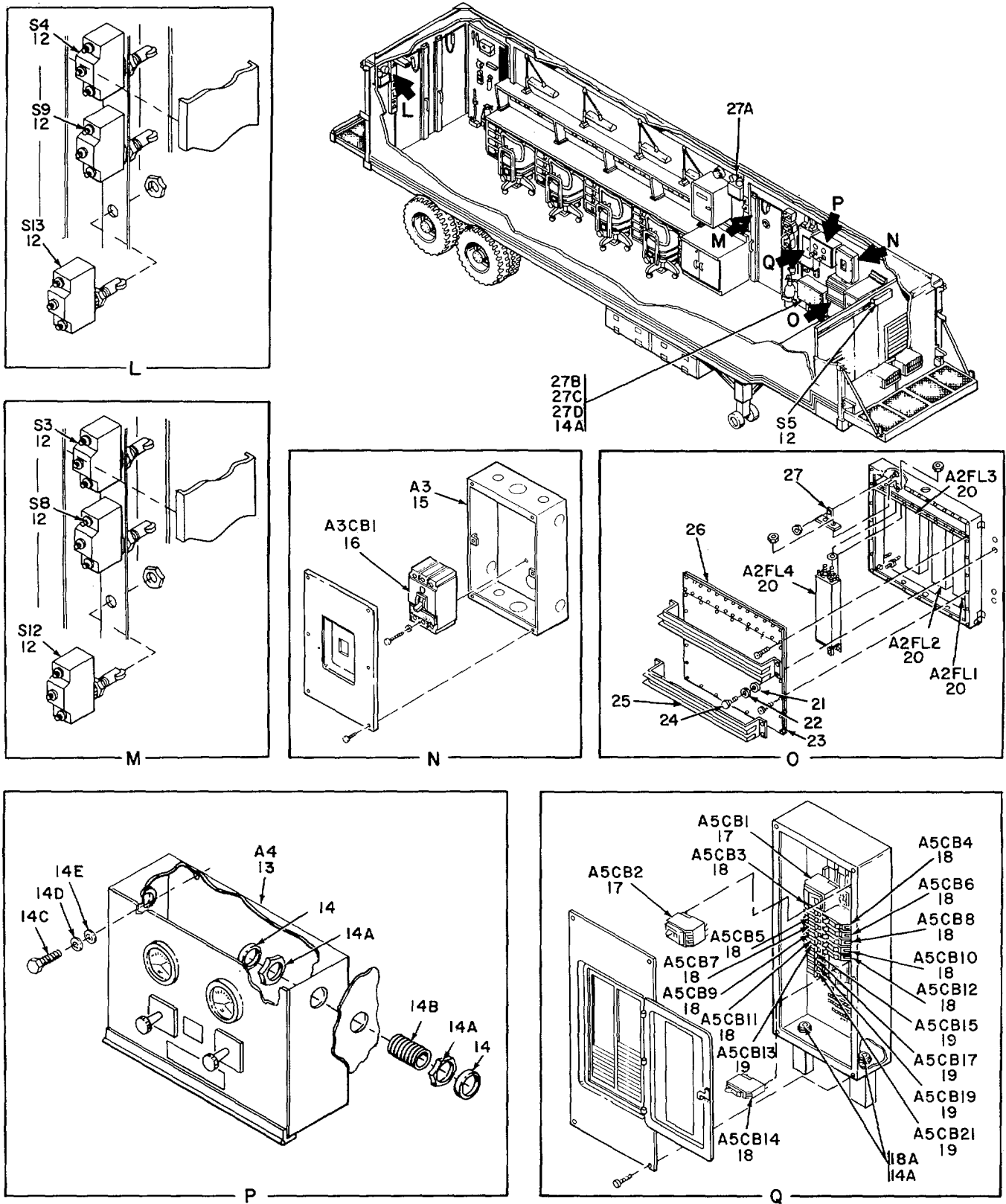


Figure 3. Electrical Installation (Sheet 2 of 6).

EL8BP030

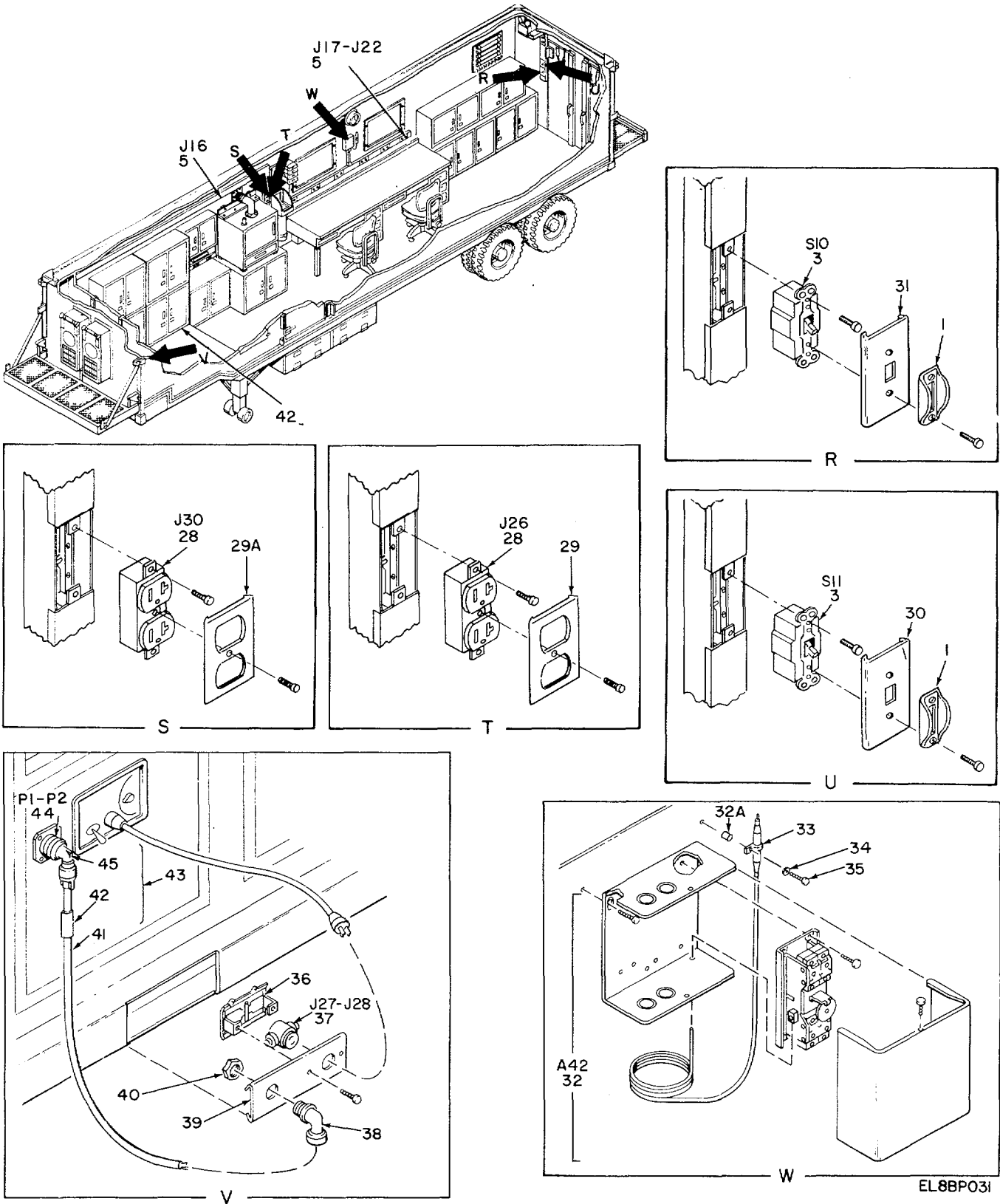
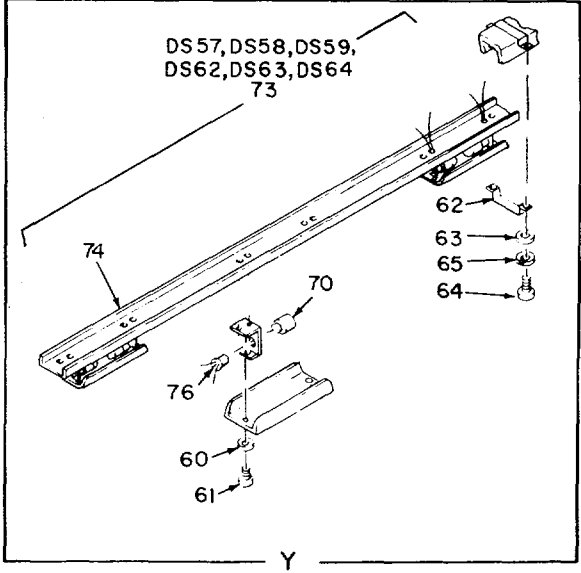
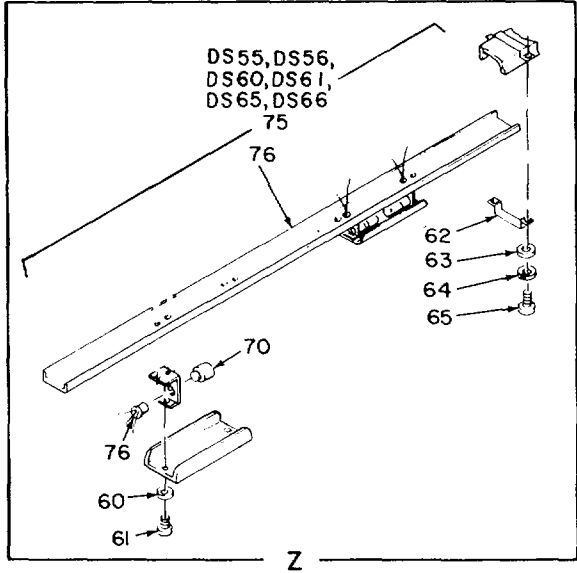
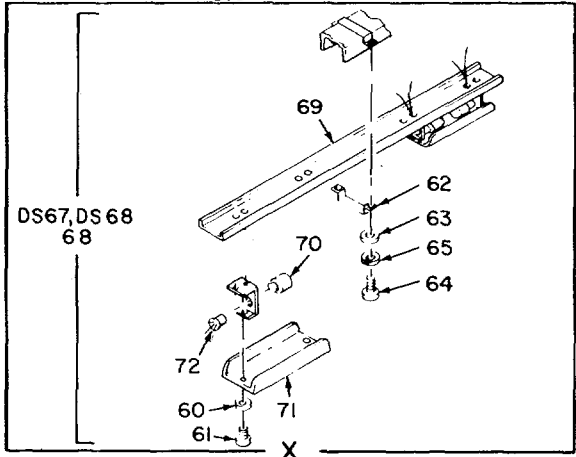
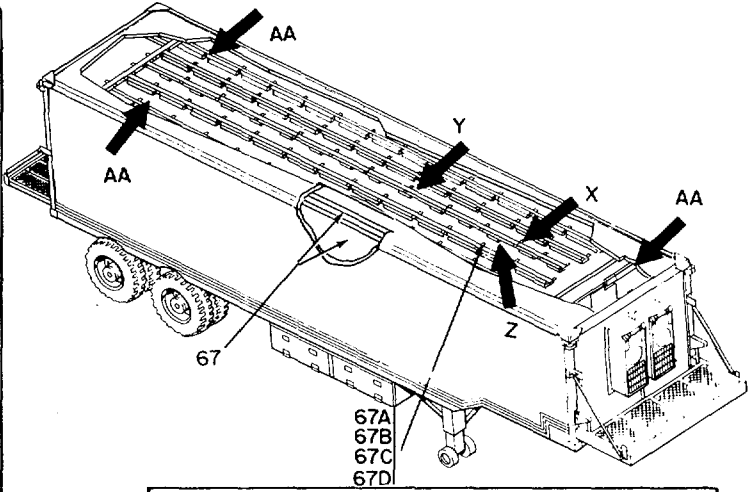
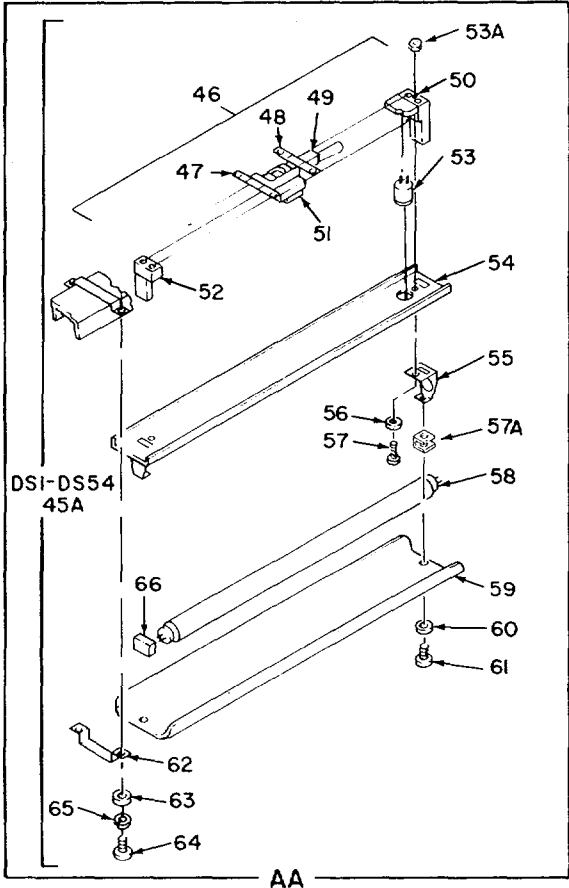


Figure 3. Electrical Installation (Sheet 3 of 6).

EL8BP031



EL8BP025

EL8BP025

Figure 3. Electrical Installation (Sheet 4 of 6).



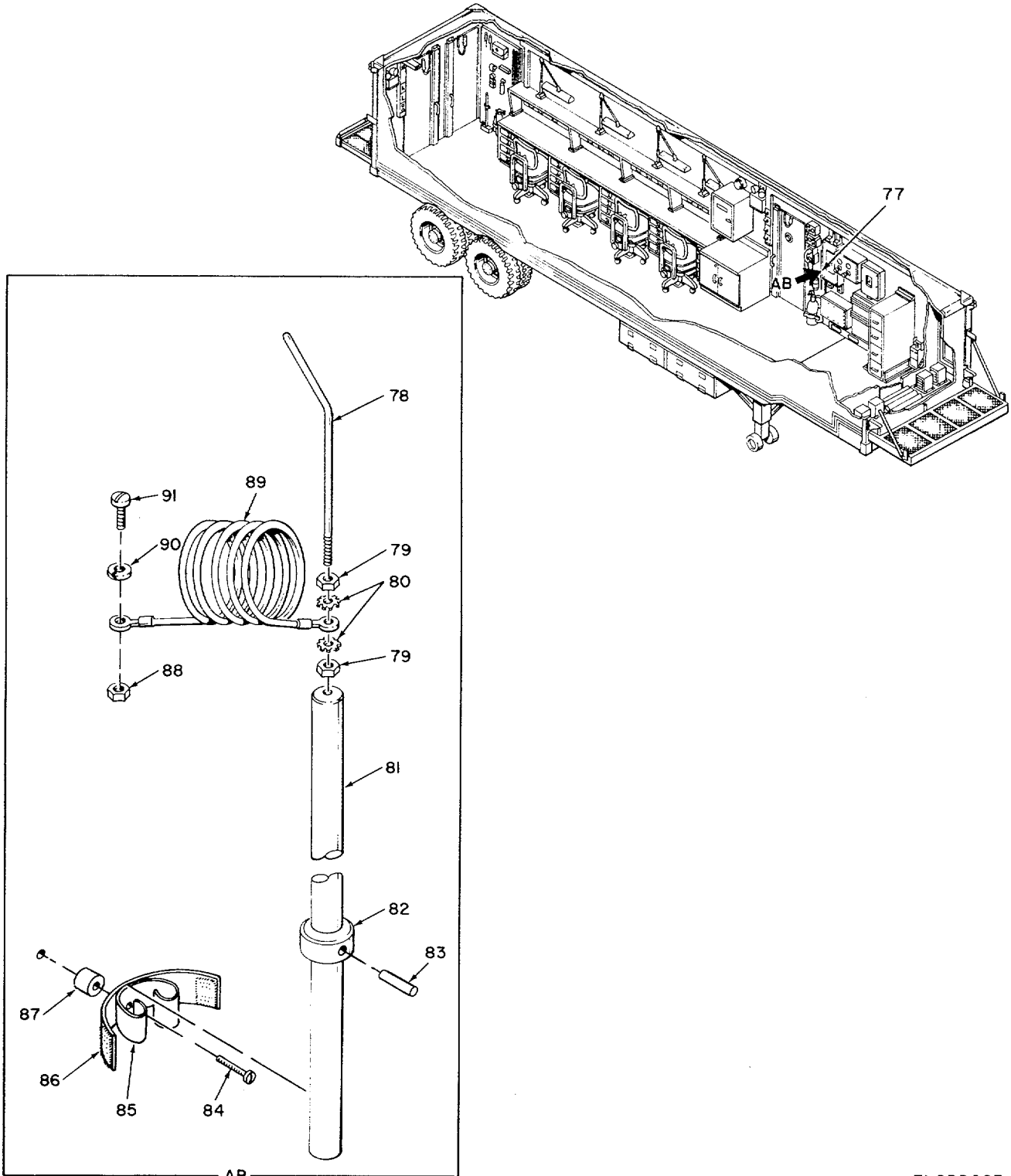
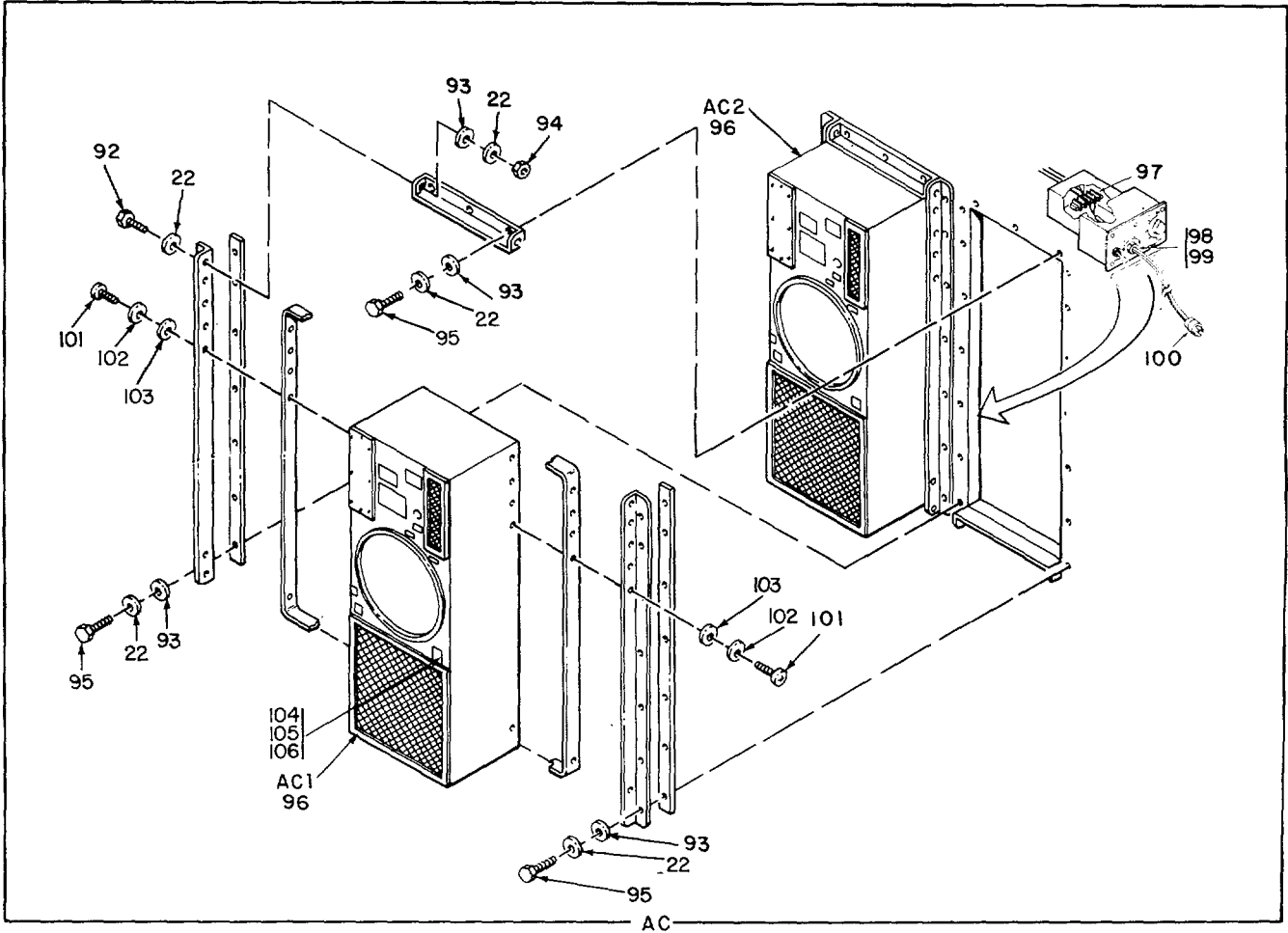
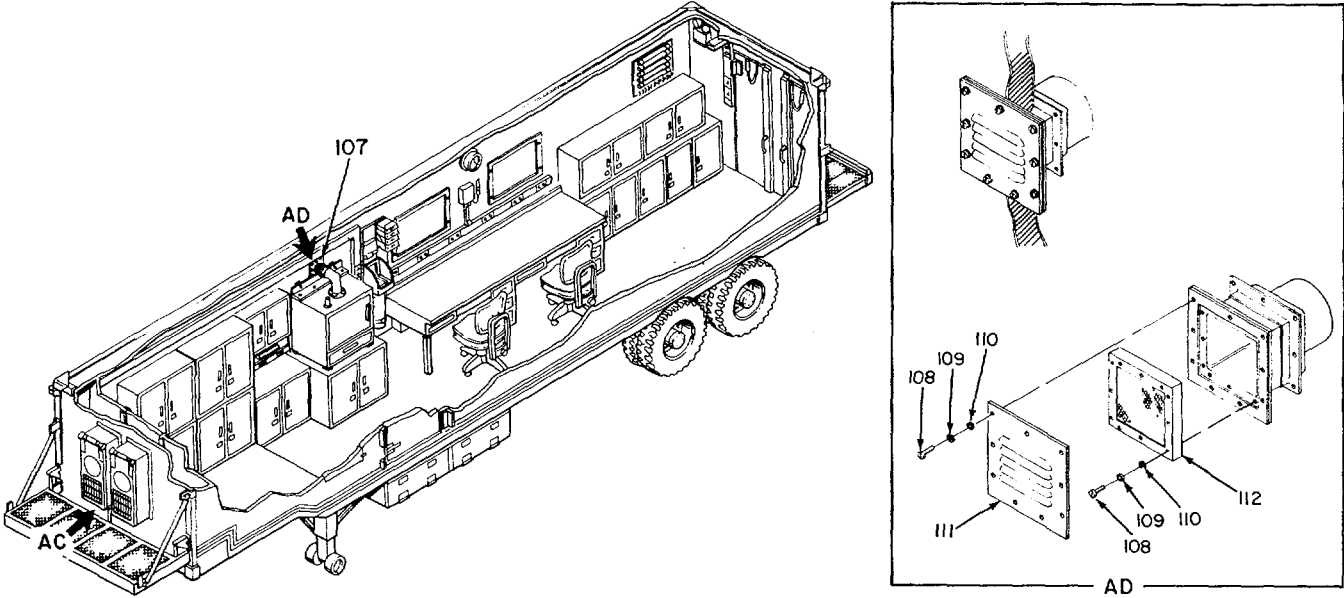


Figure 3. Electrical Installation (Sheet 5 of 6).

EL8BP023



EL8BP017

EL8BP017

Figure 3. Electrical Installation (Sheet 6 of 6).

(1) ILLUSTRATION		(2)	(3)	(4)	(5)	(6) DESCRIPTION	(7)	(8)
(a) FIG NO.	(b) ITEM NO.	SMR CODE	NATIONAL STOCK NUMBER	FSCM	PART NUMBER	USABLE ON CODE	U/M	QTY INC IN UNIT
GROUP 0101 ELECTRICAL INSTALLATION								
3	1	XDFZZ		56996	B4008471	GUARD, SWITCH .....	EA	6
3	2	XDFZZ		56996	B4008579-001	COVER, SWITCH .....	EA	1
3	3	PAOZZ		81348	WS896/12-3A	SWITCH.....	EA	6
3	4	XDFZZ		56996	B4008577	COVER, RECEPTACLE.....	EA	1
3	5	PAFZZ	5935-01-111-5568	81348	WC596/12-2	CONNECTOR, RECEPTAC.....	EA	25
3	6	XDFZZ		56996	B4008575	COVER, RECP, DUPLEX .....	EA	22
3	7	XDFZZ		56996	B4008405	COVER, RECEPTACLE.....	EA	1
3	8	XDFZZ		56996	B4008576	COVER, RECEPTACLE.....	EA	1
3	9	XDFZZ		56996	B4008581-002	COVER, SWITCH .....	EA	1
3	10	XDFZZ		56996	B4008581-001	COVER, SWITCH .....	EA	1
3	11	XDFZZ		56996	B4008579-002	COVER, SWITCH .....	EA	1
3	12	PAFZZ		91929	BZ2RQ181-T	MICROSWITCH, INTERLO.....	EA	7
3	13	XDFFF		56996	B4008038	METER BOX ASSY.....	EA	1
3	14	XDFZZ	5975-00-803-9934	59730	227	BUSHING, ELECTRICAL.....	EA	6
3	14B	XDFZZ		56996	B4008117	NIPPLE .....	EA	2
3	14C	PAFZZ	5305-00-207-2297	96906	MS35307-312	SCREW, CAP, HEXAGON H.....	EA	8
3	14D	PAFZZ	5310-00-933-8121	96906	MS35338-139	WASHER, LOCK .....	EA	8
3	14E	PAFZZ	5310-00-582-5677	96906	MS15795-810	WASHER, FLAT .....	EA	8
3	15	XDFZZ		56996	B4008390	ENCLOSURE .....	EA	1
3	16	PAOZZ	5925-01-122-4739	81922	KAL36100	CIRCUIT BREAKER.....	EA	1
3	17	PAOZZ	5925-01-100-3631	81348	WC375/03-004	CIRCUIT BREAKER.....	EA	2
3	18	PAOZZ	5925-01-042-0109	81348	WC375/01-002	CIRCUIT BREAKER.....	EA	11
3	19	PAOZZ	5925-01-111-7562	81348	WC375/01-003	CIRCUIT BREAKER.....	EA	5
3	20	PAFZZ	5915-01-124-7037	02777	F-3569	FILTER, RADIO FREQUE.....	EA	4
3	21	PAFZZ	5310-00-081-4219	96906	MS27183-12	WASHER, FLAT .....	EA	12
3	22	PAFZZ	5310-00-974-6623	96906	MS35338-140	WASHER, LOCK .....	EA	66
3	23	PAFZZ		56996	B4008119	GASKET.....	EA	1
3	24	PAFZZ	5305-00-988-1724	96906	MS35206-280	SCREW, MACHINE .....	EA	8
3	25	PAFZZ		56996	B4008355	STRAP ASSEMBLY .....	EA	2
3	26	PAFZZ		56996	B4008120	GASKET.....	EA	1
3	27	PAFZZ		02777	4.900.0069-4	BUS CONDUCTOR.....	EA	4
3	27A	XBFZZ		56996	B4008082	RACEWAY INSTAL .....	EA	1
3	27B	XDFZZ	5975-00-577-8518	59730	1942	CHASE NIPPLE, CONDUI.....	EA	6
3	27C	XDFZZ	5975-00-152-1075	02470	95-32	LOCKNUT, ELECTRICALL.....	EA	6
3	27D	XDFZZ	5975-00-710-0876	59730	1947	CHASE NIPPLE, CONDUI.....	EA	1
3	28	PAFZZ	5935-01-058-9269	81348	WC596/40-2	CONNECTOR, RECEPTAC.....	EA	5
3	29	XDFZZ		56996	B4008578	COVER, RECEPTACLE.....	EA	1
3	29A	XDFZZ		56996	B4008701	COVER, RECEPTACLE.....	EA	4

(1) ILLUSTRATION		(2)	(3)	(4)	(5)	(6)	(7)	(8)
(a) FIG NO.	(b) ITEM NO.	SMR CODE	NATIONAL STOCK NUMBER	FSCM	PART NUMBER	DESCRIPTION  USABLE ON CODE	U/M	QTY INC IN UNIT
3	30	XDFZZ		56996	B4008580	COVER, SWITCH .....	EA	1
3	31	XDFZZ		56996	B4008582	COVER, SWITCH .....	EA	1
3	32	PAOZZ		56996	B4008359	THEROSTAT .....	EA	1
3	32A	XDOZZ		56996	B4008677-001	STANDOFF .....	EA	2
3	33	PAFZZ	5340-00-187-6023	96906	MS21122-6	CLAMP, LOOP .....	EA	1
3	34	PAOZZ	5310-00-809-8546	96906	MS27183-8	WASHER, FLAT .....	EA	2
3	35	PAOZZ	5305-00-497-7409	96906	MS51861-52C	SCREW, TAPPING, THREA .....	EA	2
3	35	XDFZZ		56996	B4008178	BRACKET .....	EA	4
3	37	PAFZZ		81348	WC596/19-1	CONNECTOR, RECEPTAC .....	EA	2
3	38	PAFZZ		56996	B4008474	CONNECTOR, STRAIN .....	EA	4
3	39	XDFZZ		56996	B4008172	COVER, RACEWAY .....	EA	4
3	40	PAFZZ		80063	SC-C-681078-3	LOCKNUT, ELECTRICA .....	EA	4
3	41	XBFZZ		81349	CO-0440F-0665	CABLE .....	FT	1
3	42	NFFZZ		80063	SC-C-681320-9	BAND, IDENT .....	EA	1
3	43	PAFFF		56996	B4008378	CABLE ASSEMBLY POWE .....	EA	2
3	44	PAFZZ		96906	MS3108A22-225	..... CONNECTOR	EA	1
3	45	PAFZZ		96906	MS3056-12A	ADAPTER .....	EA	1
3	45A	XDOOO		56996	B4008160	FIXTURE ASSY .....	EA	54
3	46	PAOOO		56996	B4008347	SUB ASSEMBLY, FIXTU .....	EA	1
3	47	XDOZZ		80063	SC-C-539558	COVER, BALLASTT .....	EA	2
3	48	XDDZZ	6250-00-408-2639	80063	SC-8-539568	SUPPORT BALLAST .....	EA	2
3	49	PAOZZ	5915-01-073-6128	80063	SC-C-681186	FILTER, RADIO FREQUE .....	EA	1
3	50	PAOZZ	6210-01-106-6116	80063	SC-C-681183	MOUNT, LAMP .....	EA	1
3	51	PAOZZ	6250-00-804-3449	80063	SC-C-681185	BALLAST, LAMP .....	EA	1
3	52	PAOZZ	6210-01-106-6116	80063	SC-C-681183	MOUNT, LAMP .....	EA	1
3	53	PAOZZ		80063	SC-C-539504	LAMP, STARTER .....	EA	1
3	53A	PAOZZ	5310-00-680-6627	96906	MS25082-1	NUT, PLAIN, HEXAGON .....	EA	2
3	54	XDOZZ		56996	B4008240	COVER .....	EA	1
3	55	XDOZZ	6250-00-449-7859	80063	SC-C-681035	COVER, LAMP .....	EA	2
3	56	PAOZZ	5310-00-045-3296	96906	MS35338-43	WASHER, LOCK .....	EA	2
3	57	PAOZZ	5305-00-989-7434	96906	MS35207-263	SCREW, MACHINE .....	EA	2
3	57A	XDFZZ	5310-00-14-8453	96906	MS90724-7	NUT, SHEET SPRING .....	EA	2
3	58	PAOZZ		80063	SC-D-539495	LAMP, FLUORESCENT .....	EA	1
3	59	XDOZZ	6210-00-921-6682	80063	SC-C-539466	WINDOW, LIGHTING FIX .....	EA	1
3	60	PAOZZ	5310-00-809-8544	96906	MS27183-7	WASHER, FLAT .....	EA	4
3	61	PAOZZ	5305-00-984-6195	96906	MS35206-245	SCREW, MACHINE .....	EA	2
3	62	XDOZZ		50996	B4008174-001	CLIP, COVER .....	EA	50
3	63	PAOZZ	5310-00-983-8483	96906	MS27183-5	WASHER, FLAT .....	EA	10
3	64	PAOZZ	5305-00-984-4988	96906	MS35206-5	SCREW, MACHIN .....	EA	10
3	65	PADZZ	5310-00-045-4007	96906	MS35338-41	WASHER, LOCK .....	EA	10

SECTION II

TM 11-5410-217-24P

(1) ILLUSTRATION		(2)	(3)	(4)	(5)	(6)	(7)	(8)
(a) FIG NO.	(b) ITEM NO.	SMR CODE	NATIONAL STOCK NUMBER	FSCM	PART NUMBER	DESCRIPTION  USABLE ON CODE	U/M	QTY INC IN UNIT
3	66	XDOZZ	6210-00-757-9694	80063	SC-C-539498	7LOCK, LAMP FLUORESC .....	EA	2
3	67	XBFZZ		56996	B4008083	PANELING & DUCT.....	EA	1
3	67A	XDFZZ		56996	B4008174	CLIPCOVER .....	EA	79
3	67B	PAFZZ	5305-00-98-4988	96906	MS35206-25	SCREW,MACHNE .....	EA	158
3	67C	PAFZZ	5310-00-045-4007	96906	MS35338-41	WASHER, LOCK .....	EA	158
3	67D	PAFZZ	5310-00-983-8483	96906	MS27183-5	WASHER,FLAT .....	EA	100
3	68	XDOOO		56996	B4008162	FIXTURE ASSY .....	EA	1
3	69	XDOZZ		56996	B4008349	COVER .....	EA	1
3	70	PAOZZ		08806	25T8DC	LAMP INCANDESCENT .....	EA	4
3	71	XDOZZ	6210-00-451-8350	80063	SC-C-539466-1	WINDOW,LIGHTING FIX.....	EA	2
3	72	PAOZZ	6250-00-995-9074	80063	SC-C-681207	LAMPHOLDER .....	EA	4
3	73	XDOOO		56996	B4008161	FIXTURE ASSY .....	EA	2
3	74	XDOZZ		56996	B4008241	COVER .....	EA	1
3	75	XDOOO		56996	B4008159	FIXTURE ASSY .....	EA	3
3	76	XDOZZ		56996	B4008239	COVER .....	EA	1
3	77	XDFFF		56996	B4008734	PROBE, SHORTING ASSY .....	EA	1
3	78	PAFZZ		56996	B4008735	ROD,THREADED END .....	EA	1
3	79	PAFZZ	5310-00-855-1102	96906	MS35649-2255	NUT,PLAIN, HEXAGON.....	EA	2
3	80	PAFZZ	5310-00-022-8834	96906	MS35333-108	WASHER,LOCK .....	EA	2
3	80	XDFZZ		56996	B4008736	HANDLE, PROBE .....	EA	1
3	82	XDFZZ		56996	B4008737	COLLAR, PROBE .....	EA	1
3	83	XDFZZ	5315-00-844-3965	96906	MS16562-48	PIN,SPRING .....	EA	1
3	84	XDFZZ	5305-00-954-8998	96906	MS35214-61	SCREW,MACHINE .....	EA	2
3	85	XDFZZ		56996	B4008758	SPRING,CLIP HLDR.....	EA	2
3	86	XOFZZ		56996	B4008776	STRAP,PROBE.....	EA	2
3	87	XDFZZ		56996	B4008677-002	STAND OFF .....	EA	2
3	87	PAFZZ		56996	B4008677-002	INSULATOR, STANDOFF .....	EA	2
3	88	PAFZZ	5310-00-939-2653	96906	MS51969-1	NUT, PLAIN HEXAGON.....	EA	4
3	89	PAFZZ		56996	B4008738	CABLE ASSEMBLY, POWE .....	EA	1
3	90	PAFZZ	5310-00-942-5109	96906	MS35335-89	WASHER,LOCK .....	EA	7
3	91	PAOZZ	5305-00-954-8152	96906	MS35215-59	SCREW,MACHINE .....	EA	6
3	92	PAFZZ	5306-00-637-9675	96906	MS35307-332	BOLT, MACHINE .....	EA	8
3	93	PAFZZ	5310-00-625-5756	96906	MS15795-812	WASHER,FLAT .....	EA	74
3	94	PAFZZ	5310-00-767-0445	96906	MS51971-2	NUT, PLAIN,HEXAGON.....	EA	8
3	95	PAFZZ	5306-00-637-9674	96906	MS35307-336	BOLT,MACHINE .....	EA	B
3	96	XDFDD		56996	B4008506	AIR CON MOD .....	EA	2
3	97	XDFZZ	5940-00-983-6122	81349	39T8-2	TERMINAL BOARD .....	EA	1
3	98	XDFZZ		56996	B4008280-001	STRAIN RELIEFCONN .....	EA	1
3	99	XDFZZ		80063	SC-C-681078-2	LOCKNUT .....	EA	1
3	100	PAFZZ		56996	B4008321-003	CABLE ASSEMBLY .....	EA	1

SECTION II

TM 11-5410-217-24P

(1) ILLUSTRATION		(2)	(3)	(4)	(5)	(6)	(7)	(8)
(a) FIG NO.	(b) ITEM NO.	SMR CODE	NATIONAL STOCK NUMBER	FSCM	PART NUMBER	DESCRIPTION  USABLE ON CODE	U/M	QTY INC IN UNIT
3	101	PAFZZ	5305-00-059-3661	96906	MS51958-65	SCREW,MACHINE .....	EA	20
3	102	PAFZZ	5310-00-883-9384	96906	MS15795-842	WASHER,FLAT .....	EA	20
3	103	PAFZZ	5310-00-933-8120	96906	MS35338-138	WASHER, LOCK .....	EA	20
3	104	XDFZZ		56996	B4008481	GASKET.....	EA	1
3	105	XDFZZ		80063	SC-C-539759-1	RIVET, DOME HD.....	EA	4
3	106	XDFZZ		56996	B4008480	COVER .....	EA	1
3	107	XDFZZ		56996	B4008702	OVEN EXHAUST,INST.....	EA	1
3	108	PAFZZ	5305-00-054-6674	96906	MS51957-49	SCREW,MACHINE .....	EA	8
3	109	PAFZZ	5310-00-933-8119	96906	MS35338-137	WASHER, LOCK .....	EA	21
3	110	PAFZZ	5310-00-225-5328	96906	MS15795-841	WASHER, FLAT .....	EA	21
3	111	XDFZZ		56996	B4008705	LOUVER COVER PLATE .....	EA	1
3	112	XDFZZ		56996	B4008707	EMI/RFI PANEL .....	EA	1
					<b>28/(29)BLANK)</b>			

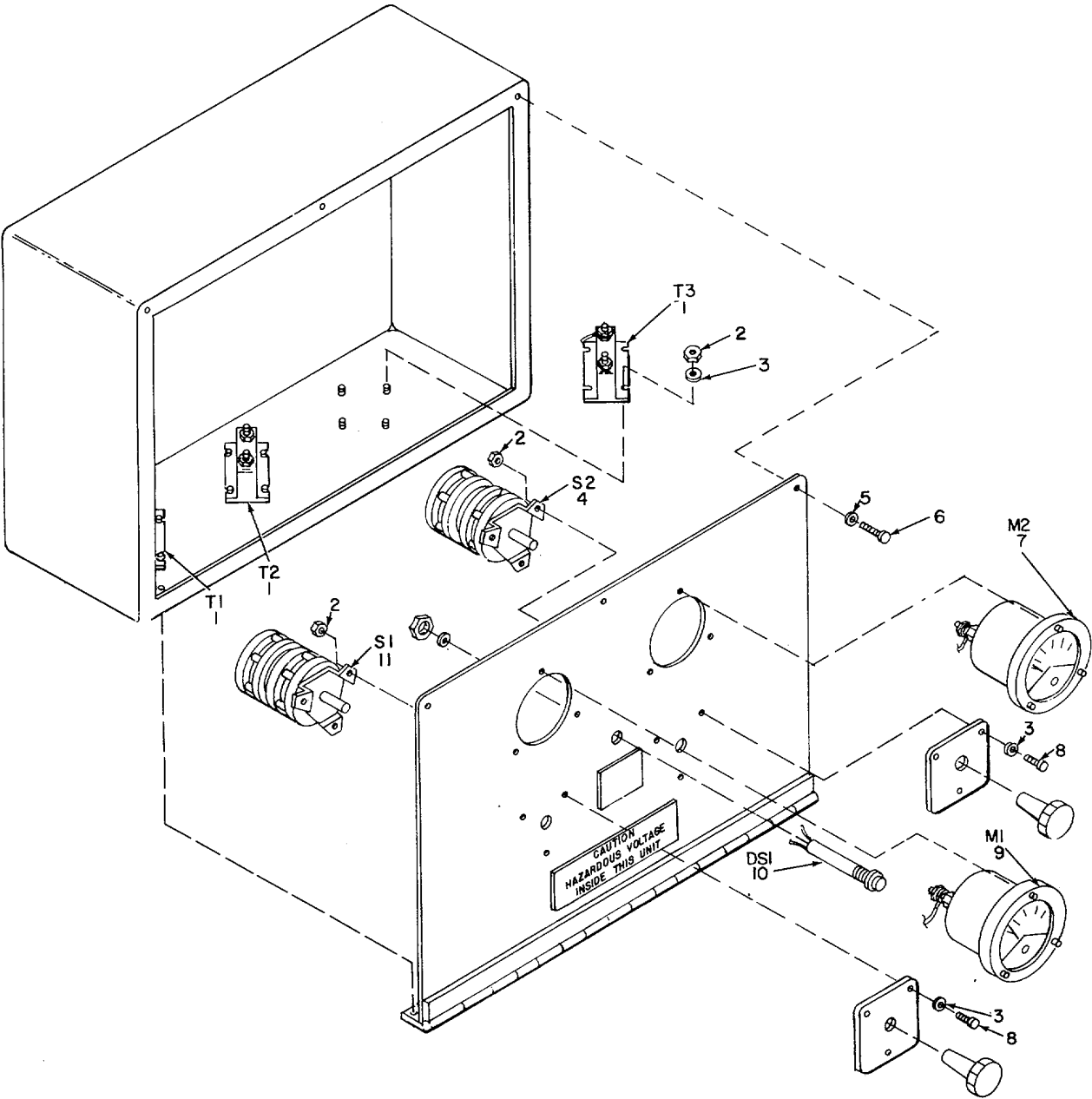


Figure 4. Meter Box.

EL8BP009

SECTION II

TM 11-5410-217-24P

(1) ILLUSTRATION		(2)	(3)	(4)	(5)	(6)	(7)	(8)
(a) FIG NO.	(b) ITEM NO.	SMR CODE	NATIONAL STOCK NUMBER	FSCM	PART NUMBER	DESCRIPTION  USABLE ON CODE	U/M	QTY INC IN UNIT
						GROUP 01010102 METER BOX ASSEMBLY		
4	1	PAFZZ		53498	802-943-U-RLLS	TRANSFORMER .....	EA	3
4	2	PAFZZ	5310-00-811-3494	96906	MS2104ND8	NUT,SELF-LOCKING,HE .....	EA	18
4	3	PAFZZ	5310-00-809-8544	96906	MS27183-7	WASHER,FLAT .....	EA	18
4	4	PAFZZ	5930-00-570-5477	82121	2410H	SWITCH,ROTARY .....	EA	1
4	5	PAFZZ	5310-00-014-5850	96906	MS27183-42	WASHER,FLAT .....	EA	3
4	6	PAFZZ	5305-00-989-6265	96906	MS35207-262	SCREW, MACHINE .....	EA	3
4	7	PAFZZ	6625-00-538-9710	8349	MR36W200ACAAAR	AMMETER.....	EA	1
4	8	PAFZZ	5305-00-984-6193	96906	HS35206-245	SCREW,MACH.....	EA	6
4	9	PAFZZ		81349	MR36W300ACWR	VOLTMETER.....	EA	1
4	10	PAFZZ	6625-01-135-3274	52797	2A-5D5	INDICATOR,PHASE SEQ.....	EA	1
4	11	PAFZZ	5930-00-148-8929	82121	2405H	SWITCH, ROTARY .....	EA	1
<b>31</b>								



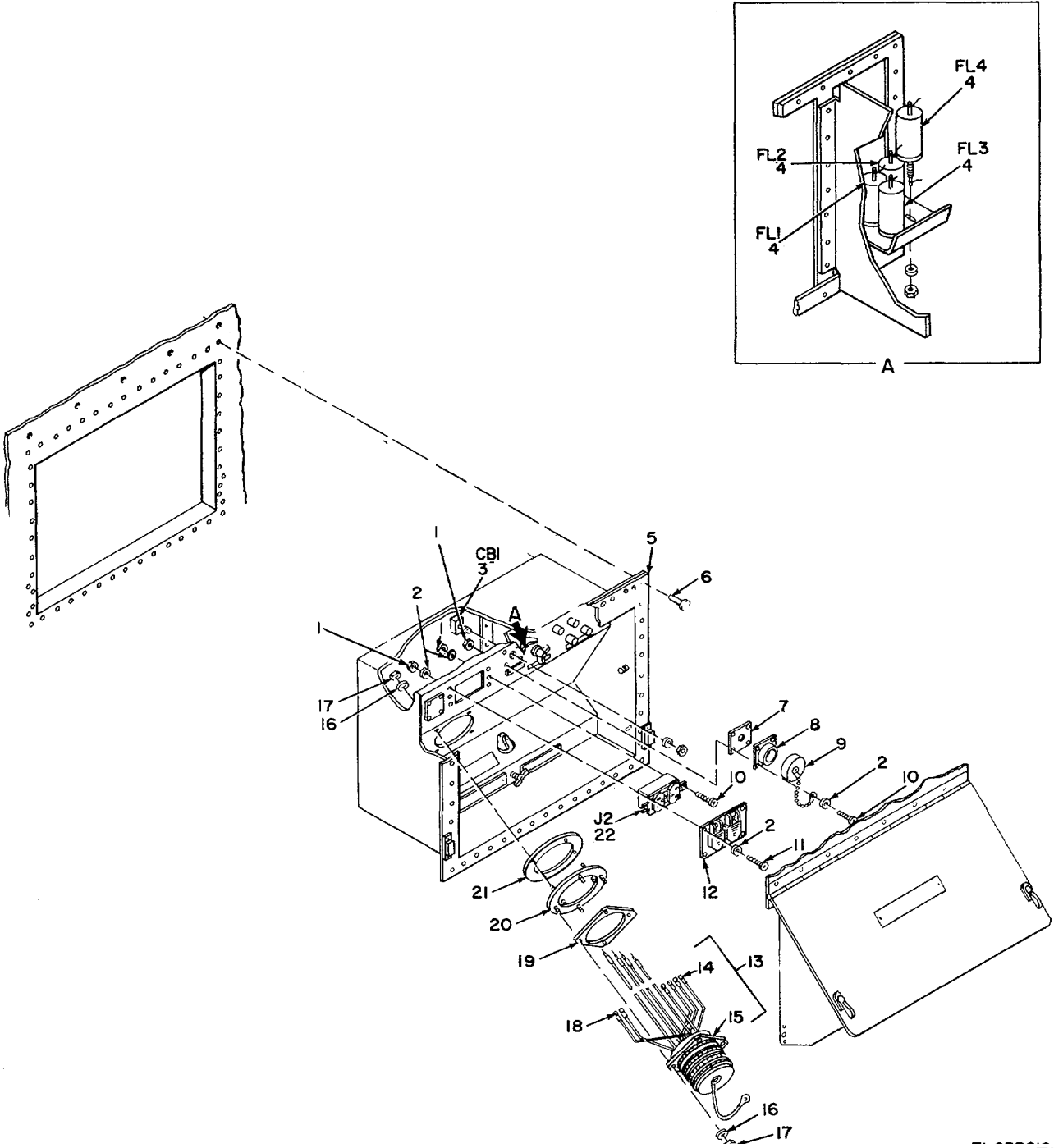


Figure 5. Power Entrance Box.

EL8BP010

SECTION II

TM 11-5410-217-24P

(1) ILLUSTRATION		(2)	(3)	(4)	(5)	(6)	(7)	(8)
(a) FIG NO.	(b) ITEM NO.	SMR CODE	NATIONAL STOCK NUMBER	FSCM	PART NUMBER	DESCRIPTION  USABLE ON CODE	U/M	QTY INC IN UNIT
						GROUP 01010103 POWER ENTRANCE BOX ASSEMBLY		
5	1	PAFZZ	5310-00-807-1465	96906	MS21042-06	NUT,SELF-LOCKING,EX.....	EA	16
5	2	PAFZZ	5310-00-983-84B3	96906	MS27183-5	WASHER,FLAT .....	EA	16
5	3	PAFZZ	5925-00-686-3297	96906	MS25244-5	CIRCUIT BREAKER .....	EA	1
5	4	PAFZZ	5915-00-946-5369	56289	JWm7-112Z	FILTER .....	EA	4
5	5	XDFFF		56996	B4008514	BOX ASSY .....	EA	1
5	6	PAFZZ	5320-00-490-5523	81349	M24243/7-A606H	RIVET,BLIND.....	EA	42
5	7	PAFZZ		80063	SC-C-681422	GASKET,CONNECIOR .....	EA	1
5	8	PAFZZ		74545	10-37093-323	CONNECTOR.....	EA	1
5	9	XDFZZ	5935-00-137-4879	96906	MS25043-28D	COVER,ELECTRICAL CO.....	EA	1
5	10	PAFZZ	5305-00-889-3001	96906	MS35206-231	SCREW,MACHINE .....	EA	4
5	11	PAFZZ	5305-00-9B4-4992	96906	MS35206-232	SCREW,MACHINE .....	EA	4
5	12	XDFZZ		80063	SC-C-681092	COVER,WEATHERPROOF .....	EA	1
5	13	PAFFF	5995-01-134-6634	56996	B4008273	CABLE ASSEMBLY, POWER .....	EA	1
5	14	PAFZZ	5940-00-114-1305	96906	MS25036-116	TERMINALLUGG .....	EA	4
5	15	PAFZZ		96906	MS90558C44412P	CONNECTOR,RECEPTAC.....	EA	1
5	16	XAOZZ		96906	SZ27183-11	WASHER,FLAT .....	EA	8
5	17	XADZZ		96906	MS51922-1	NUT,SELF-LOCKING,HE .....	EA	6
5	18	PAFZZ	5940-00-143-4775	96906	MS25036-156	TERINAL,LUG .....	EA	2
5	19	PAFZZ		56996	B4008477	GASKET .....	EA	1
5	20	XDFZZ		56996	B4008270	PLATE,CONN ADAPT .....	EA	1
5	21	PAFZZ		56996	B4008478	GASKET .....	EA	1
5	22	PAFZZ	5935-01-111-5568	81348	WC596/12-2	CONNECT,RECEPTACLE .....	EA	1

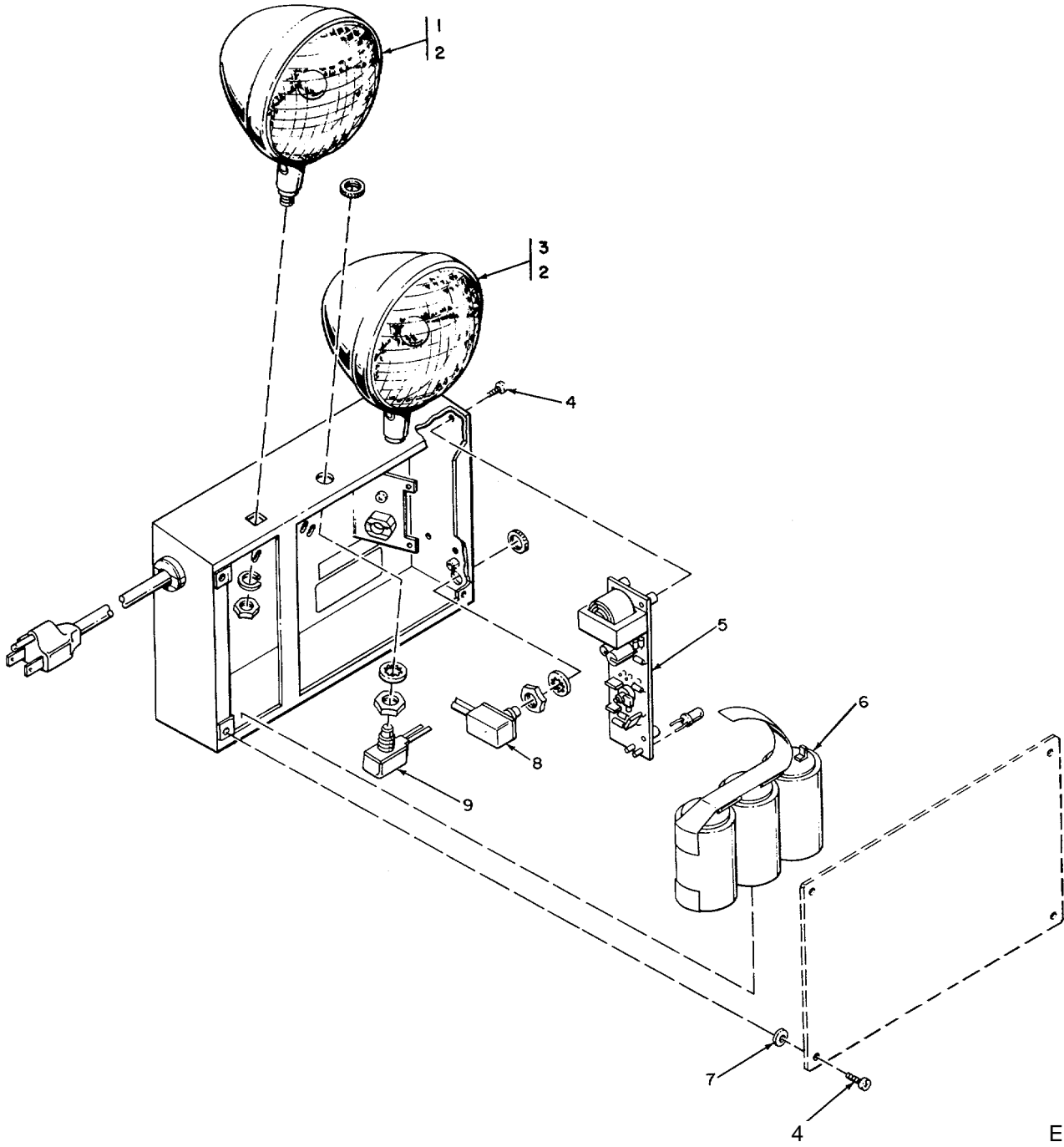


Figure 6. Emergency Lighting.

EL8BP011

SECTION II

TM 11-5410-217-24P

(1) ILLUSTRATION		(2)	(3)	(4)	(5)	(6)	(7)	(8)
(a) FIG NO.	(b) ITEM NO.	SMR CODE	NATIONAL STOCK NUMBER	FSCM	PART NUMBER	DESCRIPTION  USABLE ON CODE	U/M	QTY INC IN UNIT
						GROUP 0102 EMERGENCY LIGHTING		
6	1	PAOZZ		80538	610689-3	LAMPHEAD ASSEMBLY .....	EA	2
6	2	PAOZZ	6740-01-072-2278	08806	7613	LAMP,INCANDESCNT.....	EA	2
6	3	PAOZZ		80538	610689-1	LAMPHEAD ASSEMBLY .....	EA	2
6	4	PAOZZ		33525	726016	SCREW,MACHINE .....	EA	8
6	5	PAOZZ		80538	610692-1	PRINTED CIRCUIT BD .....	EA	1
6	6	PAOZZ	6135-01-134-6633	80538	610518	BATTERY ASSEMBLY.....	EA	1
6	7	PAOZZ		33525	719T36	WASHER,FIBRE .....	EA	4
6	8	PAOZZ		80538	610814	SWITCH .....	EA	1
6	9	PAOZZ		80536	610815	SWITCH .....	EA	1
<b>35</b>								

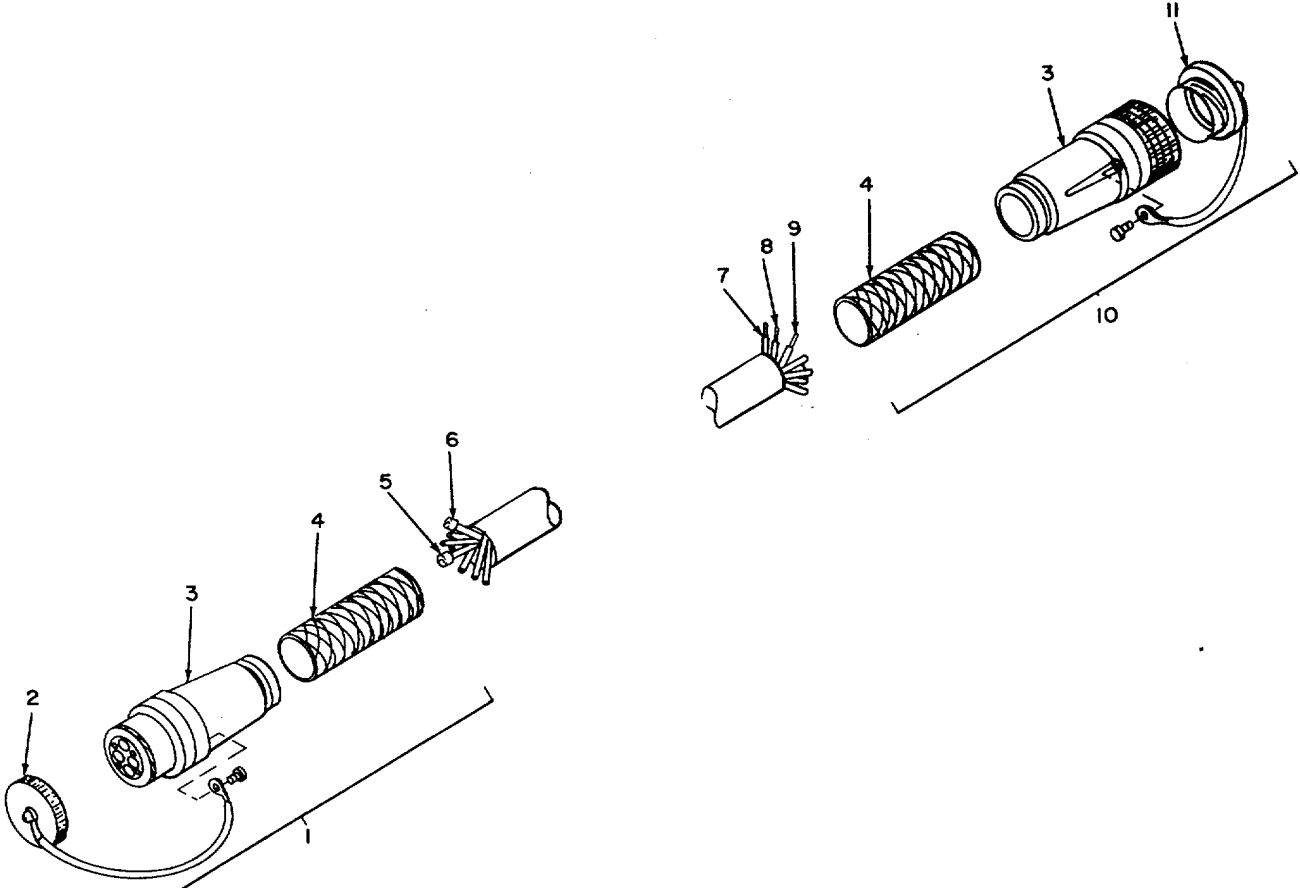


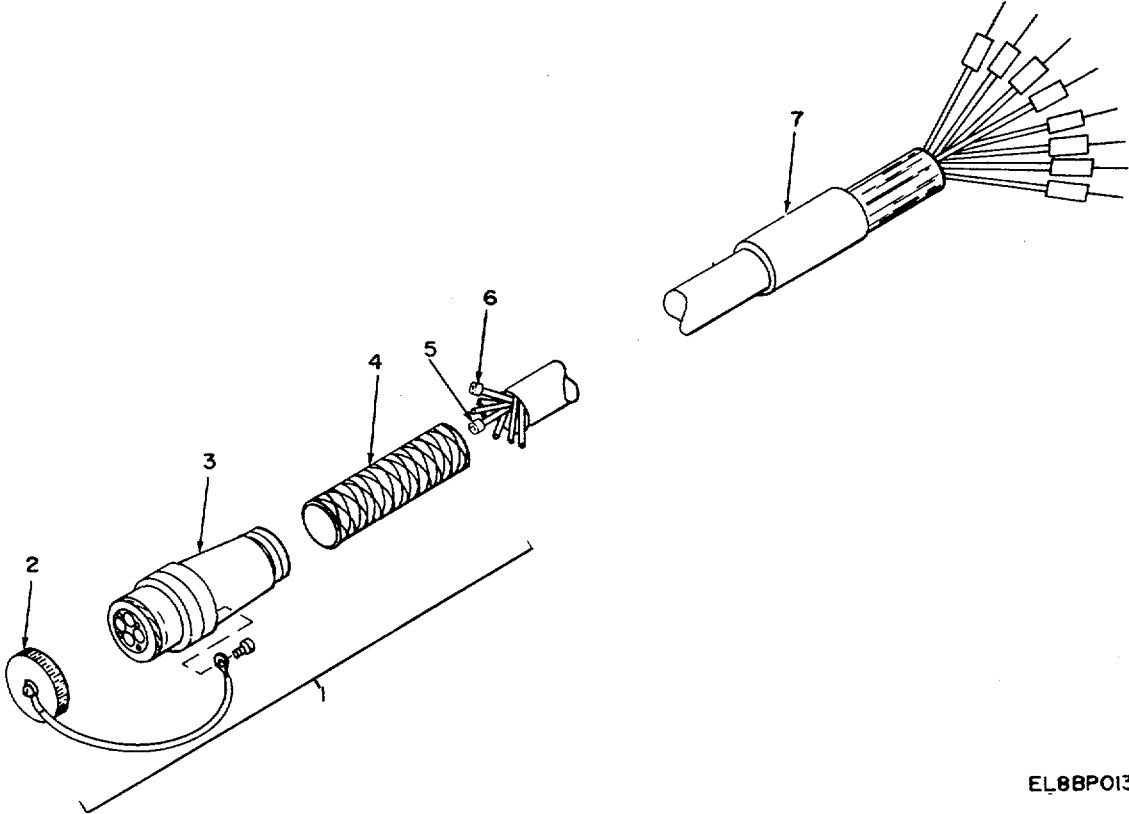
Figure 7. Cable Assembly.

EL8BP012

SECTION II

TM 11-5410-217-24P

(1) ILLUSTRATION		(2)	(3)	(4)	(5)	(6)	(7)	(8)
(a) FIG NO.	(b) ITEM NO.	SMR CODE	NATIONAL STOCK NUMBER	FSCM	PART NUMBER	DESCRIPTION  USABLE ON CODE	U/M	QTY INC IN UNIT
						GROUP 02 CABLE ASSEMBLY		
7	1	PAFZZ	5935-01-092-1037	96906	MS90557C44412 S	CONNECTOR,PLUG,ELEC.....	EA	2
7	2	XDFZZ		96906	MS90563-7C	COVER,ELEC.....	EA	2
7	3	PADZZ		96906	MS23747-15	GLAND,CABLE SEALIN.....	EA	2
7	4	PAFZZ		96906	MS90561-15	STRAIN RELIEF.....	EA	2
7	5	PAFZZ		96906	MS90560-3	CONTACT ELECTRICAL.....	EA	1
7	6	PAFZZ		96906	MS90560-8	CONTACT,ELECTRICAL.....	EA	1
7	7	PAFZZ		96906	MS90559-6	CONTACT,ELECTRICAL.....	EA	1
7	8	PAFZZ		96906	MS90559-5	CONTACT ELECTRICAL.....	EA	1
7	9	PAFZZ	5999-01-108-8602	96906	MS90559-14	CONTACT,ELECTRICAL.....	EA	1
7	10	PAFZZ	5935-01-092-1038	96906	MS90556C44412 P	CONNECTOR,PLUG,ELEC.....	EA	2
7	11	XDFZZ		96906	MS90564-7C	COVER,ELEC.....	EA	2



EL8BP013

EL8BP013

Figure 8. Cable Assembly.

SECTION II

TM 11-5410-217-24P

(1) ILLUSTRATION		(2)	(3)	(4)	(5)	(6)	(7)	(8)
(a) FIG NO.	(b) ITEM NO.	SMR CODE	NATIONAL STOCK NUMBER	FSCM	PART NUMBER	DESCRIPTION  USABLE ON CODE	U/M	QTY INC IN UNIT
						GROUP 03 CABLE ASSEMBLY		
7	1	PAFZZ	5935-01-092-1037	96906	MS90557C44412 S	CONNECTOR,PLUG,ELEC.....	EA	1
7	2	XDFZZ		96906	MS90563-7C	COVER,ELEC.....	EA	1
7	3	PADZZ		96906	MS23747-15	GLAND,CABLE SEALIN.....	EA	1
8	4	PAFZZ		96906	MS90561-15	STRAIN RELIEF.....	EA	1
8	5	PAFZZ		96906	MS90560-3	CONTACT ELECTRICAL.....	EA	1
8	6	PAFZZ		96906	MS90560-8	CONTACT, ELECTRICAL.....	EA	1
8	7	PADZZ		94025	902A014-4-03/42	END SEAL.....	EA	1
					<b>39</b>			



## SECTION IV

TM 11-5410-217-24P

## NATIONAL STOCK NUMBER INDEX

STOCK NUMBER	FIG.	ITEM	STOCK NUMBER	FIG.	ITEM
5310-00-014-5850	4	5	5306-00-637-9675	3	92
5305-00-021-3620	2	3	5310-00-680-6627	3	53A
5305-00-021-3668	2	85	5925-00-686-3297	5	3
5310-00-022-8834	3	80	5975-00-710-0876	3	270
3439-00-041-1985	2	43	4230-00-720-1618	1	2
5310-00-045-3296	3	56	5305-00-721-5665	2	86
5310-00-045-4007	3	65	6230-00-729-9614	2	143
5310-00-045-4007	3	67C	6210-00-757-9694	3	66
4240-00-052-3776	2	40	5310-00-767-0445	3	94
5305-00-054-6674	2	68	5975-00-803-9934	3	14
5305-00-054-6674	3	108	6250-00-804-3449	3	51
5305-00-059-3661	3	101	5310-00-807-1465	5	1
5305-00-059-3667	2	6	5310-00-809-8544	3	60
5180-00-064-5178	2	60	5310-00-809-8544	4	3
5310-00-081-4219	3	21	5310-00-809-8546	3	34
5310-00-082-1404	2	92	5310-00-811-3494	4	2
5940-00-114-1305	5	14	5315-00-844-3965	3	83
5110-00-115-5049	2	68B	5975-00-844-7083	2	82
5305-00-137-3033	2	76A	3439-00-853-8760	2	44
5935-00-137-4879	5	9	5310-00-855-1102	3	19
5940-00-143-4775	5	18	5999-00-819-6320	2	5
5310-00-144-8453	3	57A	5999-00-819-6320	2	46
5305-00-147-3241	2	7	5310-00-880-5976	2	103
5930-00-148-8929	4	11	5310-00-883-9384	2	10
5305-00-151-3723	2	93	5310-00-883-9384	2	62
5975-00-152-1075	3	27C	5310-00-908-9384	3	102
6240-00-152-2982	2	132	5305-00-889-3001	5	10
6240-00-152-2996	2	14	4730-00-908-6293	2	68A
3439-00-155-4597	2	50	6210-00-921-6682	3	59
6240-00-155-7786	2	144	5310-00-933-8119	2	10
7520-00-162-6178	2	149	5310-00-933-8119	3	109
5110-00-175-3629	2	36	5310-00-933-8120	2	11
7920-00-178-8315	2	142	5310-00-933-8120	3	103
5340-00-187-6023	3	33	5310-00-933-8121	2	76
5305-00-207-2297	3	14C	5310-00-933-8121	2	116
5975-00-224-5260	2	147	5310-00-433-8121	3	140
5310-00-225-5328	2	69	5310-00-934-9765	2	12
5310-00-225-5328	3	110	5310-00-942-5109	3	90
5120-00-227-7377	2	33	5915-00-946-5369	5	4
5120-00-233-6985	2	35	5305-00-954-8152	3	91
5120-00-236-2140	2	32	5305-00-954-8998	3	80
5340-00-238-9411	2	95	5310-00-968-5208	2	91
5120-00-239-8250	2	30	3439-00-973-2249	2	45
5110-00-239-8253	2	51	5310-00-974-6623	2	122
5120-00-240-8716	2	141	5310-00-914-6623	3	22
5120-00-247-0864	2	47	5310-00-374-6623	3	22
5305-00-249-2665	2	96	5310-00-982-6813	2	102
5310-00-250-9477	2	114	5940-00-983-6122	3	97
3439-00-260-7719	2	41	5310-00-983-8483	2	2
3439-00-267-7151	2	19	5310-00-983-8483	3	60
3439-00-269-8404	2	42	5310-00-983-8483	3	670
4210-00-270-4512	2	146	5310-00-983-8483	5	2
5120-00-278-1270	2	34	5305-00-934-4988	3	64
5140-00-289-8910	2	27	5309-00-934-4988	3	67B
5120-00-293-3481	2	31	5305-00-964-4992	5	11
5120-00-293-3486	2	29	5305-02-964-6193	3	61
6250-00-408-2639	3	48	5305-00-984-6193	4	6
5305-00-432-4169	2	133A	5310-00-964-7042	2	87
5305-00-432-7954	2	105	5305-00-988-1724	3	24
6250-00-449-1859	3	55	5305-00-989-6265	4	6
5120-00-451-8250	2	140	5305-00-939-7434	3	57
6210-00-451-8350	3	71	5305-00-993-2459	2	67
5320-00-490-5523	5	6	6250-00-995-9074	3	72
4940-00-492-4728	2	38	5310-00-997-1888	2	70
4940-00-492-4739	2	39	5830-01-038-3126	2	134
4940-00-492-4739	2	51A	5310-01-325-6444	2	84
6150-00-495-1214	2	59	5130-01-041-2278	2	21
5305-00-497-7409	3	35	5925-01-042-0109	3	18
5305-00-497-7410	2	17	5310-01-043-0041	2	121
5305-00-497-7410	2	61	4940-01-054-0041	2	151
6625-00-538-9710	4	7	5935-01-058-9269	3	28
5805-00-543-0012	2	63	6625-011-060-6804	2	135
5930-00-510-5477	4	4	3426-01-061-3616	2	20
5975-00-577-8518	3	27B	6240-01-072-2278	6	2
5310-00-582-5677	2	77	5915-01-073-6128	3	49
5310-00-582-5677	2	115	5935-01-092-1037	7	1
5310-00-582-5677	3	14E	5935-01-092-1037	8	1
5310-00-625-5756	2	123	5935-01-092-1038	7	10
5310-00-625-5756	3	93	7110-01-094-5655	2	13
5306-00-637-9674	3	95	5925-01-100-3631	3	17

STOCK NUMBER		FIG.	NATIONAL STOCK NUMBER INDEX		FIG.	ITEM	
FSCM	PART NUMBER	FIGURE NO.	ITEM NO.	FSCM	PART NUMBER	FIGURE NO.	ITEM NO.
6135-01-103-6514		2	145	5305-01-116-3523		2	99
6210-01-106-6116		3	50	5925-01-122-4739		3	16
6210-01-106-6116		3	52	4540-01-124-3417		2	81C
5999-01-108-8602		7	9	5915-01-124-7037		3	20
5120-01-110-9193		2	148	5930-01-124-8390		2	81B
5935-01-111-5568		3	5	6625-01-127-3593		2	81
5935-01-111-5568		5	22	6135-01-134-6633		6	6
5925-01-111-7562		3	19	5995-01-134-6634		5	13
6625-01-116-2292		2	136	6625-01-135-3274		4	10
80058	AN/USM-451	2	135	56996	B4008679-002	2	67A
91929	8Z2RQ181-T	3	12	56996	B4008701	3	29A
56996	B4008038	3	13	56996	B4008702	3	107
56996	B4008049	2	8	56996	B4008705	3	111
56996	B4008082	3	27A	56996	B4008707	3	112
56996	B4008083	3	67	56996	B4008711	2	72
56996	B4008117	3	148	56996	B4008712	2	74
56996	B4008119	3	23	56996	B4008715	2	73
56996	B4008120	3	26	56996	B4008726	2	128
56996	B4008159	3	75	56996	B4008734	3	77
56996	B4008160	3	45A	56996	B4008735	3	78
56996	B4008161	3	73	56996	B4008736	3	81
56996	B4008162	3	68	56996	B4008137	3	82
56996	B4008172	3	39	56996	B4008738	3	89
56996	B4008174	3	67A	56996	B4008740	2	26
56996	B4008174-001	3	62	56996	B4008742	2	89
56996	B4008178	3	36	56996	B4008742-1	2	110
56996	B4008239	3	76	56996	B4008742-2	2	111
56996	B4008240	3	54	56996	B4008142-3	2	112
56996	B4008241	3	74	56996	B4008744	2	90
56996	B4008270	5	20	56996	B4008745	2	113
56996	B4008273	5	13	56996	B4008746	2	120
56996	B4008280-001	3	98	56996	B4008741	2	130
56996	B4008321-003	3	100	56996	B4008743	2	129
56996	B4008347	3	46	56996	B4008749	2	126
56996	B4008349	3	69	56996	B4008750	2	127
56996	B4008355	3	25	56996	B4008751	2	117
56996	B4008359	3	32	56996	B4008752	2	118
56996	B4008378	3	43	56996	B4008753	2	125
56996	B4008390	3	15	56996	B4008757	2	133
56996	B4008405	3	7	56996	B4008758	3	85
56996	B4008442-001	2	97	56996	B4008760	2	79
56996	B4008442-005	2	150	56996	B4008761	2	80
56996	B4008443	2	104	56996	B4008764	2	124
56996	B4008466	2	4	56996	B4008768	2	98
56996	B4008471	3	1	56996	B4008769	2	109
56996	B4008474	3	38	56996	B4008770	2	101
56996	B4008477	5	19	56996	B4008773	2	107
56996	B4008478	5	21	56996	B4008774	2	106
56996	B4008480	3	106	56996	B4008715	2	133B
56996	B4008481	3	104	56996	B4008776	3	86
56996	B4008506	3	96	80538	CC-2-BH-SRS-CP-M	2	9
56996	B4008513	2	152	17794	CT-15	2	43
56996	B4008514	5	5	81349	CO-0440F-0665	3	41
56996	B4008556	2	77A	81361	D5-51-269	1	2
56996	B4008558	2	81	81361	D5-77-2001	1	3
56996	B4008569	2	55	02777	F-3569	3	20
56996	B4008570	2	56	08806	F15T8CW	2	132
56996	B4008571	2	57	80244	GGG-P-468TYP1CL1	2	28
56996	B4008572	2	58	81348	GGG-P-46UTYP1CL1	2	51
56996	B4008575	3	6	81349	GGG-P-471TYP2CL2	2	29
56996	B4008576	3	8	81348	GGG-P-471TY11CL2	2	30
56996	B4008577	3	4	81348	GGG-P-471TYL2CL1	2	31
56996	B4008578	3	29	81348	GGG-S-121TYP1CL1	2	32
56996	B4008579-001	3	2	81348	GGG-S-121TYP1CL8	2	33
56996	B4008579-002	3	11	81349	GGG-S-121TYP6CL1	2	34
56996	B4008580	3	30	81349	GGG-T-870TYP1CL2	2	47
56996	B4008581-001	3	10	81349	GGG-T-870TYP3	2	35
56996	B4008581-002	3	9	81348	GGGT558-2	2	27
56996	B4008582	3	31	81348	GGG531	2	40
56996	B4008585-004	2	81A	17794	HP150	2	38
56996	B4008642	2	37	56289	JW17-1122	5	4
56996	B4008670	2	25	81922	KAL36100	3	16
56996	B4008677-001	3	32A	80058	LS-147F/F1	2	134
56996	B4008677-002	3	87	17794	LS-15	2	41
56996	B4008677-002	3	87	81349	MIL-C-1194TYPE A	2	1

FSCM	PART NUMBER	FIGURE NO.	ITEM NO.	FSCM	PART NUMBER	FIGURE NO.	ITEM NO.
99999	MISSION TOOLS	2	43A	96906	MS35649-2255	3	79
81349	MR36W200ACAAR	4	7	96906	MS35649-2316	2	121
81349	MR36W300ACWR	4	9	96906	MS35650-304	2	12
96906	MS15795-806	2	103	96906	MS35842-15	2	68A
96906	MS15795-810	2	77	96906	MS51861-14	2	133A
96906	MS15795-810	2	115	96906	MS51861-27C	2	76A
96906	MS15795-810	3	14E	96906	MS51861-39	2	105
96906	MS15795-812	2	123	96906	MS51861-52C	3	35
96906	MS15795-812	3	93	96906	MS51861-53C	2	17
96906	MS15795-841	2	69	96906	MS51861-53C	2	68
96906	MS15795-841	3	110	96906	MS51922-1	5	17
96906	MS15795-842	2	10	96906	MS51941-10	2	84
96906	MS15795-842	2	62	96906	MS51957-49	2	68
96906	MS15795-842	3	102	96906	MS51957-49	3	108
96906	MS16562-48	3	83	96906	MS51958-65	3	101
96906	MS21042-06	5	1	96906	MS51958-71	2	6
96906	MS21044-C06	2	102	96906	MS51971-2	3	94
96906	MS21044N08	4	2	96906	MS90556C44412P	7	10
96906	MS21122-6	3	33	96906	MS90557C44412S	7	1
96906	MS23747-15	7	3	96906	M590557C44412S	8	1
96906	MS23747-15	8	3	96906	MS90558C44412P	5	15
96906	MS25036-116	5	14	96906	MS90559-14	7	9
96906	MS25036-156	5	18	96906	MS90559-5	7	8
96906	MS25043-28D	5	9	96906	MS90559-6	7	7
96906	MS25082-1	3	53A	96906	MS90560-3	7	5
96906	MS25244-5	5	3	96906	MS90560-3	8	5
96906	MS27183-11	5	16	96906	MS90560-8	7	6
96906	MS27183-12	3	21	96906	MS90560-8	8	6
96906	MS27183-42	4	5	96906	MS90561-15	7	4
96906	MS27183-5	2	2	96906	MS90561-15	8	4
96906	MS27183-5	3	63	96906	MS90563-7C	7	2
96906	MS27183-5	3	61D	96906	MS90563-7C	8	2
96906	MS27183-5	5	2	96906	MS90564-7C	7	11
96906	MS27183-6	2	92	96906	MS90724-7	3	57A
96906	MS27183-7	3	60	80058	M10	1	1
96906	MS27183-7	4	3	81349	M24066/2-304	2	5
96906	MS27183-8	3	34	81349	M24243/7-A606H	5	6
96906	MS3056-12A	3	45	80205	NAS1070-416	2	91
96906	MS3108A22-22S	3	44	17794	PE-200A	2	20
96906	MS35206-231	5	10	17794	PFP-30	2	21
96906	MS35206-232	5	11	17794	PP200C	2	23
96906	MS35206-245	3	61	08806	PR2	2	144
96906	MS35206245	4	8	80063	SC-A-417792-4	2	95
96906	MS35206-25	3	64	80063	SC-B-539492	2	59
96906	MS35206-25	3	67B	80063	SC-8-539568	3	48
96906	MS35206-280	3	24	80063	SC-C-539451	2	67B
96906	MS35207-262	4	6	80063	SC-C-539466	3	59
96906	MS35207-263	3	57	80063	SC-C-539466-1	3	71
96906	MS35207-283	2	67	80063	SC-C-539469	2	142
96906	MS35214-61	3	84	80063	SC-C-539495	2	14
96906	MS35215-59	3	91	80063	SC-C-539498	3	66
96906	MS35307-271	2	7	80063	SC-C-539502	2	140
96906	MS35307-307	2	3	80063	SC-C-539503	2	149
96906	MS35307-310	2	85	80063	SC-C-539504	2	15
96906	MS35307-312	3	14C	80063	SC-C-539504	3	53
96906	MS35307-332	3	92	80063	SC-C-539529-1	2	18
96906	MS35307-336	3	95	80063	SC-C-539558	3	47
96906	MS35307-361	2	86	80063	SC-C-539759-	3	105
96906	MS35333-108	3	80	80063	SC-C-539894	2	141
96906	MS35335-89	3	90	80063	SC-C-681035	3	55
96906	MS35338-137	2	70	80063	SC-C-681078-2	3	99
96906	MS35338-137	3	109	80063	SC-C-681078-3	2	83
96906	MS35338-138	2	11	80063	SC-C-681078-3	3	40
96906	MS35338-138	3	103	80063	SC-C-681092	5	12
96906	MS35338-139	2	76	80063	SC-C-681183	3	50
96906	MS35338-139	2	116	80063	SC-C-681183	3	52
96906	MS35338-139	3	14D	80063	SC-C-681185	3	51
96906	MS35338-140	2	122	80063	SC-C-681186	3	49
96906	MS35338-140	3	22	80063	SC-C-681207	3	72
96906	MS35338-140	3	22	80063	SC-C-681320-9	3	42
96906	MS35338-141	2	87	80063	SC-C-681422	5	7
96906	MS35338-41	3	65	80063	SC-D-14158	2	147
96906	MS35338-41	3	67C	80063	SC-D-539482	2	146
96906	MS35338-43	3	56	80063	SC-D-539495	3	58
96906	MS35425-71	2	108	80063	SC-D-539551	2	13
96906	MS35493-35	2	93	80063	SC-D-681425	2	139
96906	MS35494-32	2	96	80063	SC-D-883963GR9-3	2	52
96906	MS35494-58	2	99	80063	SC-D-883964GR9-2	2	53
96906	MS35649-2252	2	75	90303	SIZE D	2	145
96906	MS35649-2254	2	114	80058	TA-312/PT	2	63

FSCM	PART NUMBER	FIGURE NO.	ITEM NO.	FSCM	PART NUMBER	FIGURE NO.	ITEM NO.
80058	TK-101/G	2	60	08806	25T8DC	2	16
80058	TL-905/U	2	44	08806	25T8DC	3	70
17794	TP-15	2	42	59730	2542	2	82
17794	TS-15	2	49	76545	34C	2	46
81348	W-L-312TYPE3	2	131	81349	39TB-2	3	97
81348	W-L-661TYPE1CL2	2	137	39428	3922K51	2	78
81348	WC375/01-002	3	18	02777	4.900.0069-4	3	27
81348	WC375/01-003	3	19	00236	400	2	100
81348	WC375/03-004	3	17	00236	401	2	94
81348	WC596/12-2	3	5	71612	46	2	45
81348	WC596/12-2	5	22	08806	60W	2	138
81348	WC596/19-1	3	37	17794	6019-0011	2	19
81348	WC596/40-2	3	28	80538	610518	6	6
81348	WS896/12-3A	3	3	80538	610689-1	6	3
61562	XX-15	2	54	80538	610689-3	6	1
78525	YANKEE135AND351D	2	50A	80538	610692-1	6	5
95356	0122	2	60A	80538	610814	6	d
74545	10-37093-323	5	8	80536	610815	6	9
19207	11684608	2	119	17794	6993-0037	2	151
17794	1309-0015	2	23B	17794	1005-0011	2	24
97403	13217E6150	2	64	17794	7009-3005	2	50
17794	1336-0014	2	23A	17794	7014-0001	2	39
39428	1787K12	2	71	17794	7014-0001	2	51A
59730	1942	3	27B	17794	7016-0003	2	36
59730	1947	3	27D	33525	719736	6	7
52797	24-5D5	4	10	33525	726016	6	4
52942	2064	2	136	08806	7613	6	2
32532	2106-7	2	143	76732	8D-8	2	148
59730	227	3	14	53498	802-943-U-RLLS	4	1
48619	239097	2	81B	76381	8210	2	65
82121	2405H	4	11	94025	902A014-4-03/42	8	7
82121	2410H	4	4	02470	95-32	3	27C
48619	247278	2	81C				

**LATEST NATIONAL STOCK NUMBER ASSIGNMENTS**

STOCK NUMBER	FIGURE NO.	ITEM NO.
5310-00-939-2653	3	88

**LATEST PART NUMBER ASSIGNMENTS**

FSCM	PART NUMBER	FIGURE NO.	ITEM NO.
56996	B4008767	2	88
96906	MS51969-1	3	88
17794	7010-0023	2	48

By Order of the Secretary of the Army:

Official:

ROBERT M. JOYCE  
*Major General, United States Army*  
*The Adjutant General*

JOHN A. WICKHAM, JR.  
*General, United States Army*  
*Chief of Staff*

Distribution:

To be distributed in accordance with Special List.

\*U.S. GOVERNMENT PRINTING OFFICE: 1992 - 311-831161047

RECOMMENDED CHANGES TO EQUIPMENT TECHNICAL PUBLICATIONS



THEN... JOT DOWN THE DOPE ABOUT IT ON THIS FORM. CAREFULLY TEAR IT OUT, FOLD IT AND DROP IT IN THE MAIL!

**SOMETHING WRONG WITH THIS PUBLICATION?**

FROM: (PRINT YOUR UNIT'S COMPLETE ADDRESS)

DATE SENT

PUBLICATION NUMBER

PUBLICATION DATE

PUBLICATION TITLE

BE EXACT... PIN-POINT WHERE IT IS

IN THIS SPACE TELL WHAT IS WRONG AND WHAT SHOULD BE DONE ABOUT IT:

PAGE NO

PARA-GRAPH

FIGURE NO

TABLE NO

TEAR ALONG PERFORATED LINE

PRINTED NAME, GRADE OR TITLE, AND TELEPHONE NUMBER

SIGN HERE:

DA FORM 2028-2  
1 JUL 79

PREVIOUS EDITIONS ARE OBSOLETE.

P.S.—IF YOUR OUTFIT WANTS TO KNOW ABOUT YOUR RECOMMENDATION MAKE A CARBON COPY OF THIS AND GIVE IT TO YOUR HEADQUARTERS.

**PIN: 053205-000**